

Changing IP addresses in EXACT exciters and transmitter controllers in Hitachi E-Compact series transmitters



Fig. 1 Hitachi E-Compact Series

In Hitachi / HKL E-Compact Medium Power (MP) and High Power (HP) transmitters, the IP addresses of the EXACT V2 exciter(s) and CM8001 Control Module(s) are left at their factory default IP addresses. When shipped to a site for installation, they may be connected to the Ethernet switch, but they have not been configured to be on a network. Unless ordered with specific network information, they will be left in their default network settings.

The EXACT V2 exciter default is <http://192.168.0.209> and the CM8001 is <http://192.168.100.018>.

To avoid problems when configuring for a network, even a local one just at the transmitter, only one item at a time should be powered up. Otherwise, you can get IP address conflicts and not be able to connect to the desired exciter or control module.

Exciter



Fig. 2 Front view of EXACT V2 Exciter



Fig. 3 Front view of EXACT V2 Exciter

On the rear of the exciter, there are 6 Ethernet ports (Control 1 - 2 + Data 1 - 4). Control 1 is normally connected to the Ethernet switch of the transmitter. The default IP address of Control 1 is 192.168.0.209. If your transmitter is equipped with an optional second exciter, both exciters will have this default IP address, which is why they must be powered up one at a time when configuring.

Note: The Control 2 port has a default IP address of 192.168.1.210. With older firmware, it cannot be changed in the field. If you try to set Control 1 port to a 192.168.1.xx IP address, a network conflict error will be displayed and does not save the updated address. If you need to have Control 1 on a 192.168.1.xxx network and have the older firmware, please contact customer service as the exciter must be returned for a firmware upgrade.

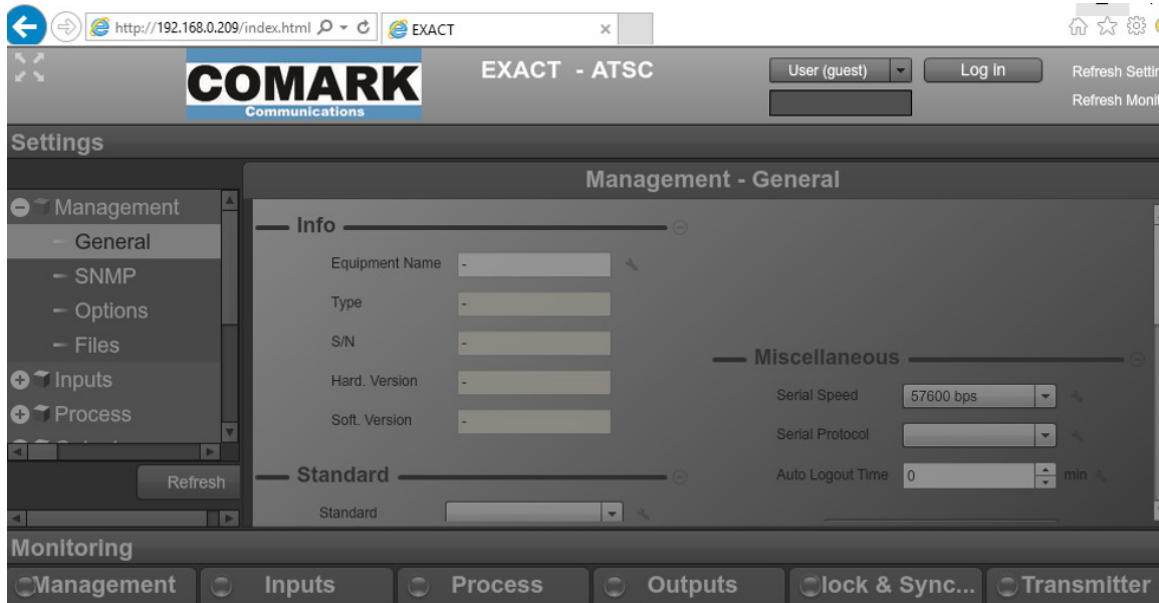
While Control 1 port settings can be viewed from the front panel of the EXACT exciter in the “CONTROL” menu, changes to its network settings can only be changed by the “MANAGEMENT” menu or through the exciter’s built in webpage.

Via the front panel: Scroll down to **MANAGEMENT** in the main menu and press the center **Green Check Mark/ENTER** button. Select **CONTROL IP PORT (Control 1)** and press **ENTER**. SET ADD/MSK/GW should appear. Scroll to the appropriate setting that you wish to change, then select **ENTER**. Use the **LEFT** and **RIGHT** arrow keys to navigate to the setting you wish to change. Use the UP and DOWN arrow keys to change the value. Once complete, press the “ENTER” button.

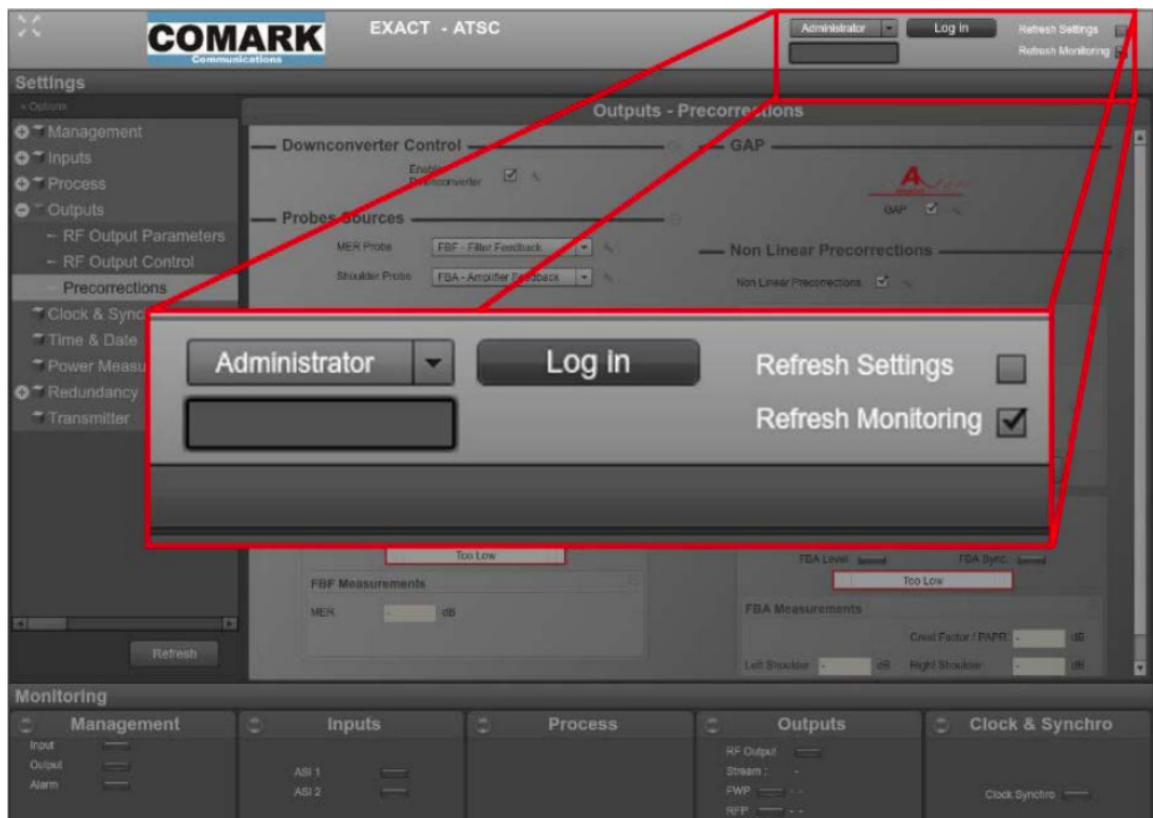
Via the Ethernet Switch or Control 1 Ethernet port: To configure, connect an Ethernet cable from a laptop to an open port on the Ethernet switch. The factory default IP address is 192.168.0.209. You will need to set your laptop default sub-net mask to 255.255.255.000, your gateway to 192.168.0.254, and give the PC a unique static IP address on the same network (e.g. 192.168.0.100).

To change from the default exciter's IP address, follow the steps below. If you have two exciters, temporarily disconnect or power off the exciter that you do not wish to change.

1. Open your web browser and type <http://192.168.0.209>. The following webpage opens:

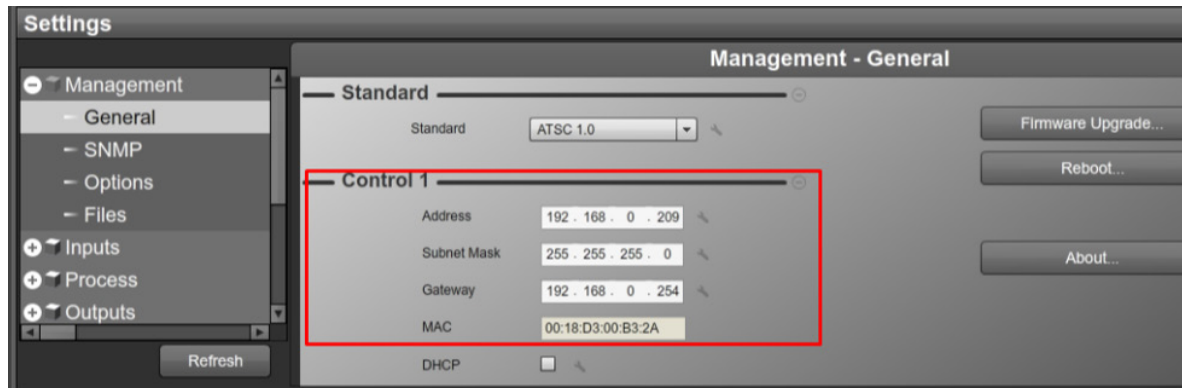


2. Select **Administrator** from the drop down menu for the User and then enter in the following password in the field found below: **admin**. Select **Login**.

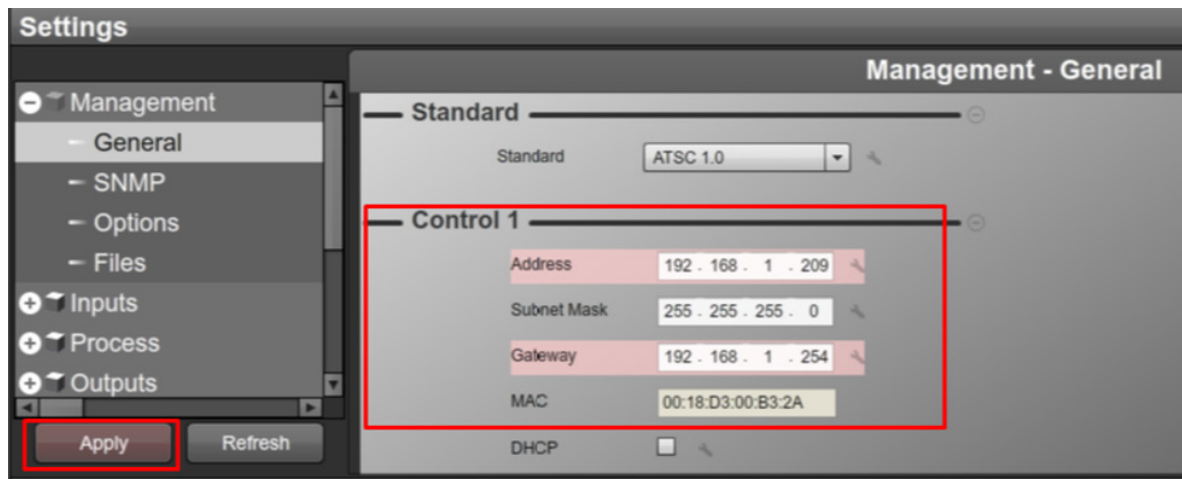


3. Under **Control 1**, make the necessary IP changes to the **Address**, **Subnet Mask**, and **Gateway** fields to comply with your network. If the transmitter is not connected to a network, leave as is: EXACT Exciter 1 IP address: 192.168.0.209.

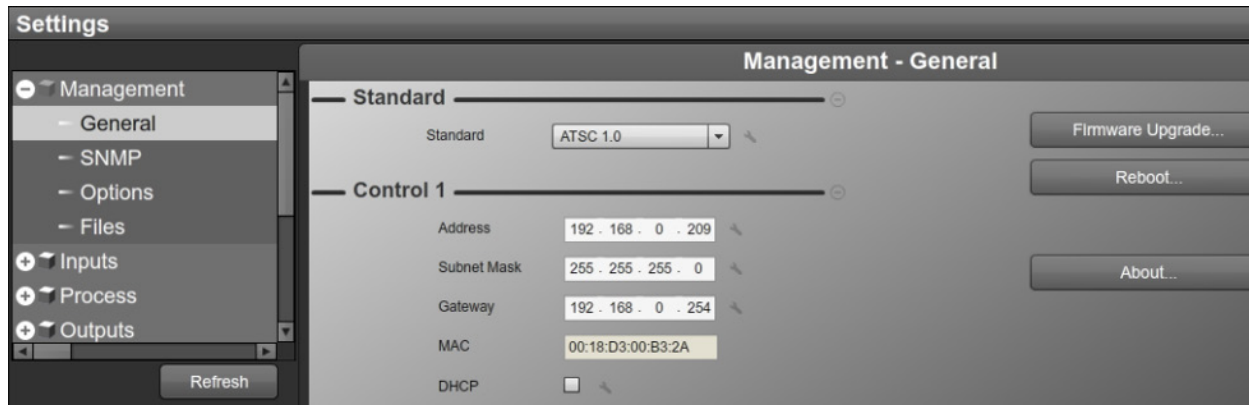
If you have a 2nd EXACT Exciter and no specific network configuration, with Exciter 1 off or disconnected, set Exciter 2's Control 1 port to: http://192.168.0.210
Sub-net mask: 255.255.255.000
Gateway: 192.168.0.254



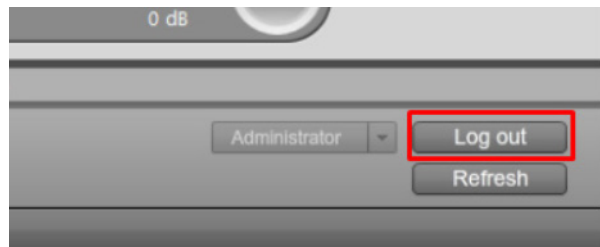
4. Once you have made the necessary changes, the Apply button appears in order to save these new changes. Select **Apply**.



5. The updated setting appears in the Control 1 fields.



6. At the top right of the page, select **Log out** to exit out of the Exciter.



Note: Be sure to reconnect any cables removed from the Control 1 port of the exciter.

Control Module: Once the network configuration has been completed for the EXACT exciter(s) and Control Module(s), a laptop configured for the network can be connected to the Ethernet switch to allow web access.



7. Enter Main Menu using the **UP** or **DOWN** navigation buttons. Toggle to **Remote Access**, then select **ENTER**. This takes you into the menus for IP Address, Subnet Mask, and Gateway. The factory defaults for each Control Module are IP address: 192.168.100.018, Subnet: 255.255.255.00, Gateway: 192.168.100.001. If you have specific network settings, enter the information at this time. If you do not, enter the following:

Transmitter Controller (for Exciter 1): 192.168.0.018

Transmitter Controller (for Exciter 2): 192.168.0.019

Sub-net mask: 255.255.255.000

Gateway: 192.168.0.254

See the following images that show how to navigate the menus (ignore the values).



Select **Remote Access** and press ENTER.



Select **IP Address** and press ENTER.



Configure the desired IP by using the ◀, ▶, ▲, ▼ keys.

Press ESC to the **Remote Access** screen.

Press the "▼" key to view the next screen.

8. Subnet Mask



Select **Subnetwork Mask** and press ENTER.



Configure the desired IP by using the keys ◀ or ▶ and ▲ or ▼

Press ESC to the **Remote Access** screen.

Press key "▼" to view the next screen.

9. Gateway





Access the **Gateway** and press ENTER.



Configure the gateway address by using the ◀, ▶, ▲, ▼ keys.

Note: Once the network configuration has been completed for the EXACT exciter(s) and Control Module(s), a laptop configured for the network can be connected to the Ethernet switch to allow web access.

Transmitter GUI: Once the exciter(s) and the control module(s) IP addresses have been set, the E-Compact's Control Module GUI must be updated so that it can "link" to the corresponding exciter's webpage.

**Control Module**

Alarms


Setup

Measurements

Power

Remote

User

TRANSMITTER SETUP

Power

transmitter

Exciter

File

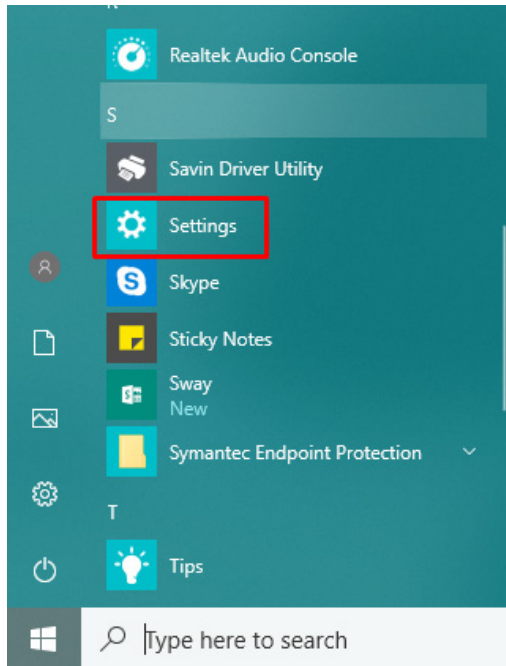
Transmitter Reset		
Exciter B	<div>Active</div>	
Transmitter Reset	<div>RESET</div>	

Exciter	
Exciter IP	<div>192.168.100.19</div>
<div>APPLY</div>	

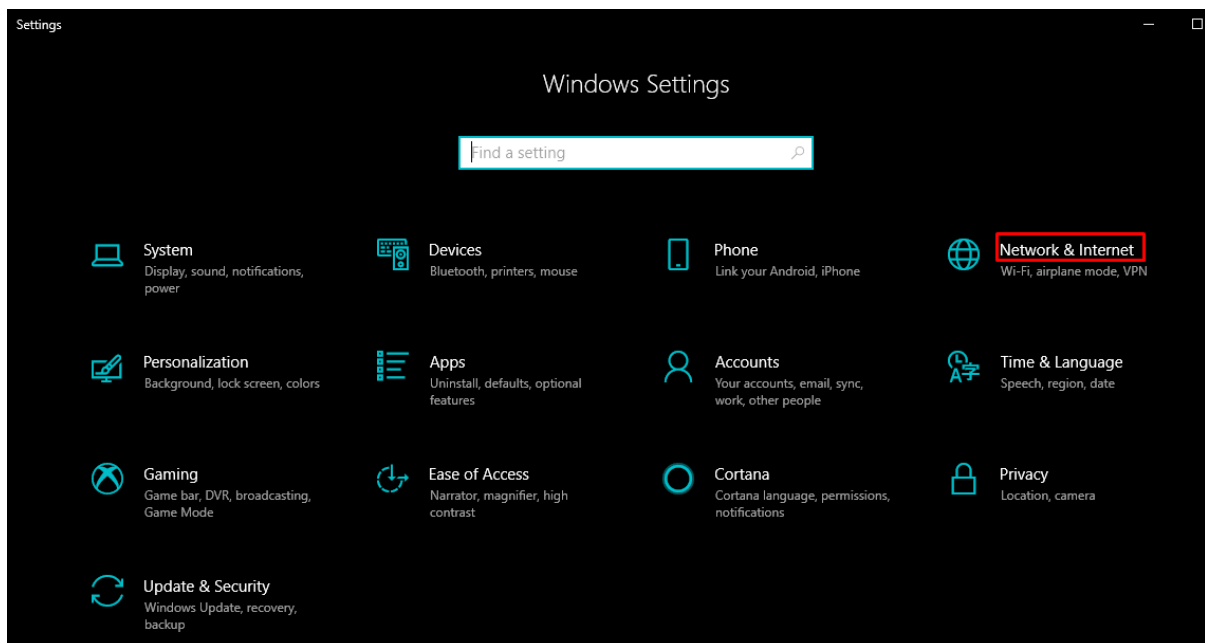
10. Select the **Setup** tab. Then select **Transmitter**. Enter the appropriate IP address for the exciter and select **APPLY**. If you have a second exciter / control, connect to the second control module and update the IP address for the second exciter.

Addendum - Chaning Your PC / Laptop Network Adapter Settings in Windows 10

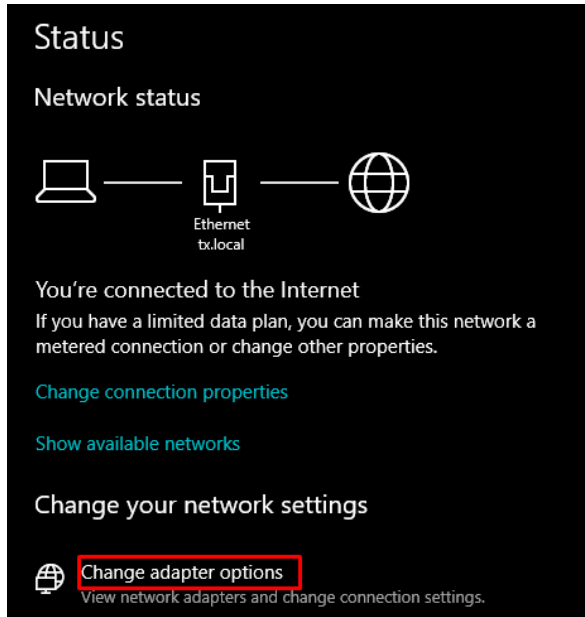
1. Select the **Windows** icon at the bottom left of the screen. Scroll to and then select **Settings**. The Window Settings screen opens.



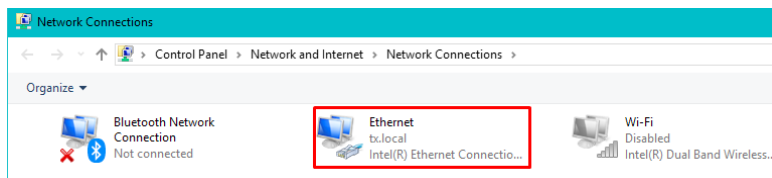
2. Select **Network & Internet**.



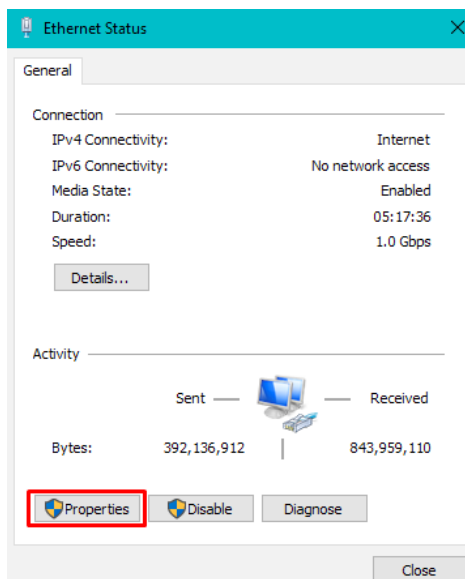
3. Select **Change adapter options** under the Status section. The Network Connections screen opens.



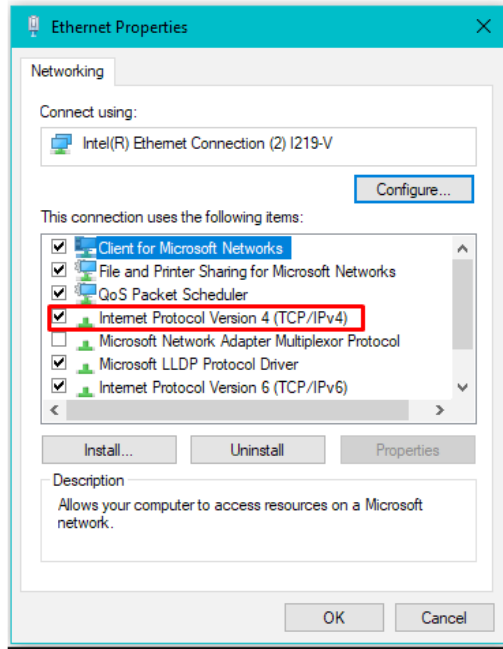
4. Double click on the **NIC adapter** icon. The Ethernet Status window opens.



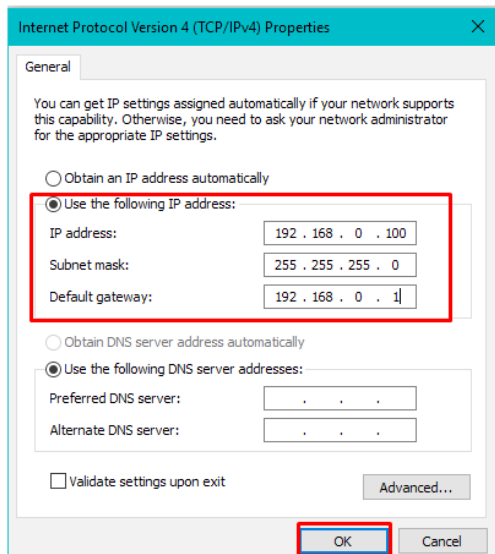
5. Select **Properties** in the dialog box.



6. Double click on **Internet Protocol Version 4 (TCP/IPv4)**. The Internet Protocol Version 4 (TCP/IPv4) Properties window opens.



7. Enter a static IP address, Subnet mask, and Default gateway. Select **OK** to save the new settings.



Hitachi Kokusai Electric Comark LLC
104 Feeding Hills Road
Southwick, MA 01077 U.S.A.
(800) 345-9295
support@comarktv.com
www.comarktv.com