


"THE DRAWINGS, INFORMATION AND SUBJECT MATTER HEREOF IS THE CONFIDENTIAL, SOLE AND EXCLUSIVE PROPERTY OF Comark Communications AND IS NOT TO BE
 COPIED, REPRODUCED OR USED IN ANY MANNER FOR ANY PURPOSE WHATSOEVER WITHOUT ITS WRITTEN CONSENT OR DIRECTION"
 ©COMARK COMMUNICATIONS 2001

A							ENGINEERING RELEASE	
REV	CHG. ORDER	ISSUED	DATE	AUTH.	DATE	DESCRIPTION		
ISSUED	T BEAULIEU	4/23/01	PROJECT NO.		ELECTRONIC FILE: 46745438-521A.DOC	DCX Web Server Configuration Procedure		
CHKD	G DeICAMPO	4/24/01						
ENG	A SNOW	5/1/01						
ENG	T KARAM	6/5/01						
MFG								
EDC	VICTOR CRUZ	6/7/01						
			DOCUMENT NUMBER		DTC CODE	SIZE	PAGE	
			46745438		521	A	1/44	
OFFICE RESP. Southwick MA								
							A	REV ←

DCX Web Server Configuration Procedure

TABLE OF CONTENTS

1. DESCRIPTION	3
1.1 IMPLEMENTATION REQUIREMENTS.....	3
2. REQUIRED EQUIPMENT	3
2.1 INSTALLATION KITS.....	3
3. INSTALLATION AND CONFIGURATION PROCEDURE.....	3
3.1 HARDWARE SETUP	3
3.1.1 <i>Terminal Server</i>	3
3.1.2 <i>Web Server Computer</i>	4
3.1.3 <i>Cabling</i>	4
3.2 SOFTWARE SETUP	4
3.2.1 <i>Adding Users</i>	4
3.2.2 <i>Terminal Server Software</i>	7
3.2.3 <i>TCP Relay Software</i>	7
3.2.4 <i>Web Based Control System Software</i>	7
3.2.5 <i>Configure Internet Information Services (IIS) for the Web Server</i>	7
3.2.6 <i>Transmitter LAN Configuration</i>	16
3.2.7 <i>Company LAN Configuration</i>	18
3.2.8 <i>Dial-up Connection Configuration (if used)</i>	18
3.2.9 <i>Java Plug-In Installation</i>	22
3.2.10 <i>TCP Relay Security Setup</i>	24
3.2.11 <i>Equinox EquiView installation</i>	27
3.2.12 <i>Terminal Server Configuration</i>	30
3.2.13 <i>Internet Explorer Configuration</i>	36
3.3 USING THE WEB BASED CONTROL SYSTEM	40
3.3.1 <i>Using the Web Based Control System on a Web Server Computer</i>	41
3.3.2 <i>Using the Web Based Control System from a Client using Dial-up-Networking</i>	42
3.3.3 <i>Using the Web based Control System from a Client using a Company LAN</i>	43

1. DESCRIPTION

This document outlines the steps for configuring a DCX Web Server.

1.1 Implementation Requirements

Ensure the compatibility requirements listed below are met before installing and configuring the system.

- The HPA CPU (Central Processing Unit) must be running code version **3.00** or higher.
- The front panel code, within the HPA controller chassis, must be running version **3.00** or higher.
 - HPAs with a **46745470** Comark part number have this code installed. All other HPAs will require a code upgrade. *Consult Comark for information regarding the upgrade.*
- The ADAPT's User Interface PCBs (printed circuit boards) require revision C or higher. The Comark part number for the User Interface PCB is **46745034.01**. *Consult Comark for information regarding the PCB.*
- The ladder logic within the PLC must be upgraded to allow Control and Monitoring through the RS232 port on the SLC503 CPU module. Exciter cabinets in the part number range **46745370 thru 46745390** will have the upgraded code installed. All others will require the PLC code upgraded. *Consult Comark for information regarding the upgrade.*

2. REQUIRED EQUIPMENT

2.1 Installation Kits.

There are two Base Kits from the Web Based Control System: **46745438.xx** and **46745515.xx**.

- Kit **46745438.xx** is for transmitters with **46745470** HPAs and **467453.xx** Exciter cabinets, the DCX Millennium transmitters.
- Kit **46745515.xx** is for all other DCX Transmitters.

The following are the requirements for installing the Kits on a PC (Personal Computer):

- Windows® 2000 Operating System
- CDROM
- Minimum 100 Megabyte free hard drive space
- 500Mhz Celeron™ processor or higher.
- Minimum of 128 Megabytes of RAM
- Minimum of 4 Megabytes of video memory
- One network card, two if the PC will be attached to a LAN.
- 56K modem, if dial-up access is required.

3. INSTALLATION AND CONFIGURATION PROCEDURE

3.1 Hardware Setup

This section will describe the procedure for installing the hardware that is in the kit. Use the parts list and the –040 drawing as a reference when installing the hardware.

3.1.1 Terminal Server

- Assemble the Mounting Rails (**item 4**) to the Terminal Server (**item 3**). The hardware is provided with the Mounting Rails.
- Mount the Terminal Server in rack using the provided screws (**item 12**). The rack must be located such that a 25-foot CAT5 cable (**item 9**), 50-foot CAT5 cable (**item 10**), or 75-foot CAT5 cable (**item 11**), can reach to the top of the HPA and Exciter cabinets. *Check the kit contents to verify which cable was supplied.*
- Mount the Ethernet/MAU adapter (**item 5**) to the 15 pin "D" connector located on the Terminal Server (**item 3**). Ensure that the "Media Select" button is in the **out** position on the Terminal Server.

3.1.2 Web Server Computer

Assemble the Web Server computer (**item 1**) per instructions included with the computer. Choose a location for the computer to allow a 25-foot CAT5 cable (**item 16**), to reach to the Terminal Server (**item 3**).

3.1.3 Cabling

- Using (**item 13**) and (**item 14**), connect the Terminal Server connector “**1**” to the Web Server computer COM PORT 1 or 2. When the EquiView software is run the selected COM PORT must be used.
- Using (**item 16**), connect the Ethernet adapter on the Terminal Server to one of the network cards within the Web Server computer.
- Using (**items 6, 7 or 8**), connect the Terminal Server connector “**2**” to **J12** on top of the Exciter cabinet.
- Using (**items 6, 7 or 8**), connect the Terminal Server connector “**3**” to **J13** on top of the Exciter cabinet.
- Using (**items 6, 7 or 8**), connect the Terminal Server connector “**4**” to **J14** on top of the Exciter cabinet.
- Using (**items 6, 7 or 8**), connect the Terminal Server connector “**5**” to **J6** on top of HPA 1 cabinet.
- If there is a **second HPA**, use (**item 6, 7 or 8**) to connect the Terminal Server connector “**6**” to the top of HPA 2.
- If there is a **third HPA**, use (**item 6, 7 or 8**) to connect the Terminal Server connector “**7**” to the top of HPA 3.
- If there is a **fourth HPA**, use (**item 6, 7 or 8**) to connect the Terminal Server connector “**9**” to the top of HPA 4.
- If there is a **fifth HPA**, use (**item 6, 7 or 8**) to connect the Terminal Server connector “**10**” to the top of HPA 5.
- If there is a **sixth HPA**, use (**item 6, 7 or 8**) to connect the Terminal Server connector “**11**” to the top of HPA 6.
- If there is a Company LAN, connect it to the second network card in the Web Server Computer.
- If there is Dial-up access to the Web Server computer, connect an analog phone line to the Web Server computer modem.

3.2 Software Setup

This section describes the procedures for installing and setting up the software to run on the Web Server PC and Terminal Server.

3.2.1 Adding Users

This section describes the procedure for adding “Users” to the Web Server PC. These “Users” are the only personnel who will be allowed to do the following:

**Connect to the PC through a dial-up connection
Control the transmitter through the Web Pages**

Any personnel who can “Ping” the web server PC (local LAN connection) will be able to monitor, but not control, the transmitter. Only a listed “User” of the Web Server PC will be allowed control of the transmitter through the web pages.

Open “Users and Passwords” by double clicking on “My Computer”. Double click on “Control Panel” then double click on “Users and Passwords”. See the figure below for a view of the “Users and Passwords” window.

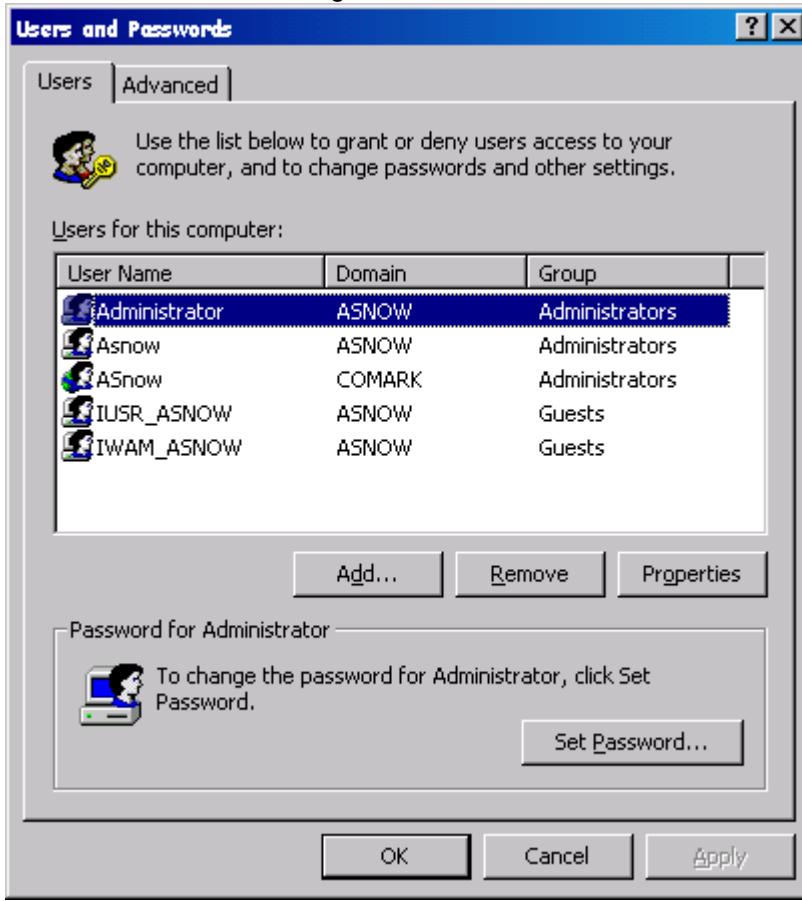


Figure 3.2.1.1 Users and Passwords

Click “Add...” to add the user’s name. See the figure below for a view of the “Add New User” window.

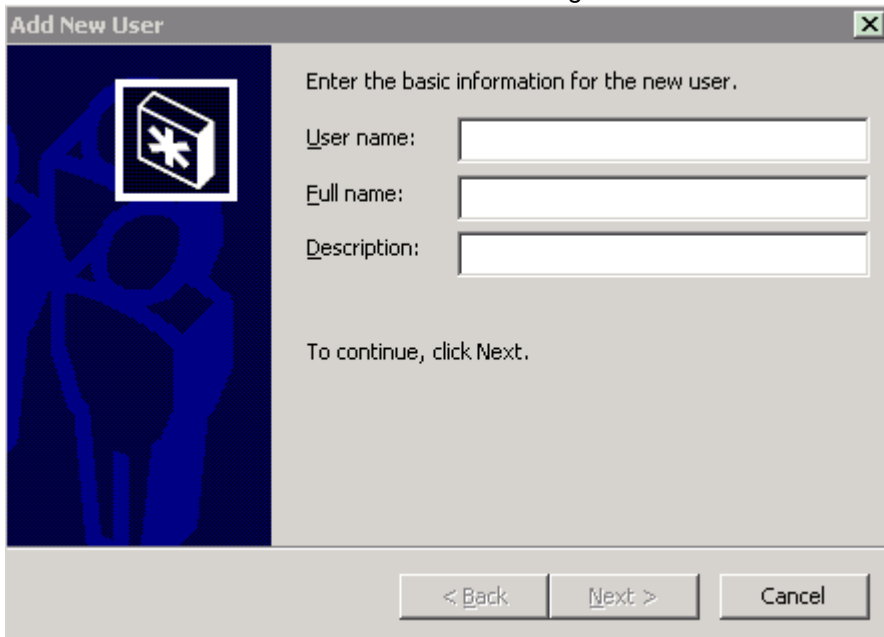


Figure 3.2.1.2 Add New User

Click "Next>" and enter the password for the user. See the figure below for a view of the "Add New User" window.

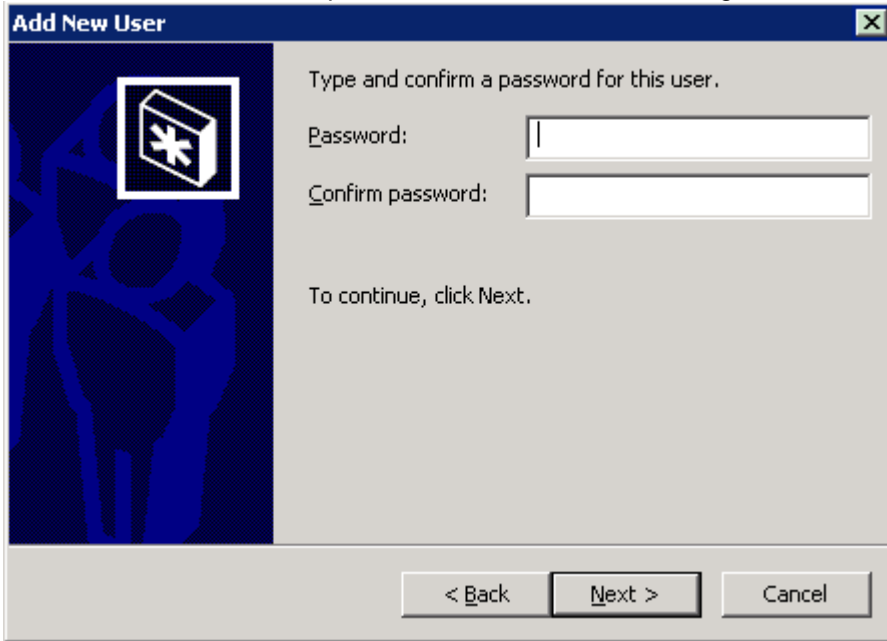


Figure 3.2.1.3 Add New User

Click "Next>" and select in which group the user will be a part of. See figure below for a view of the "Add New User" window

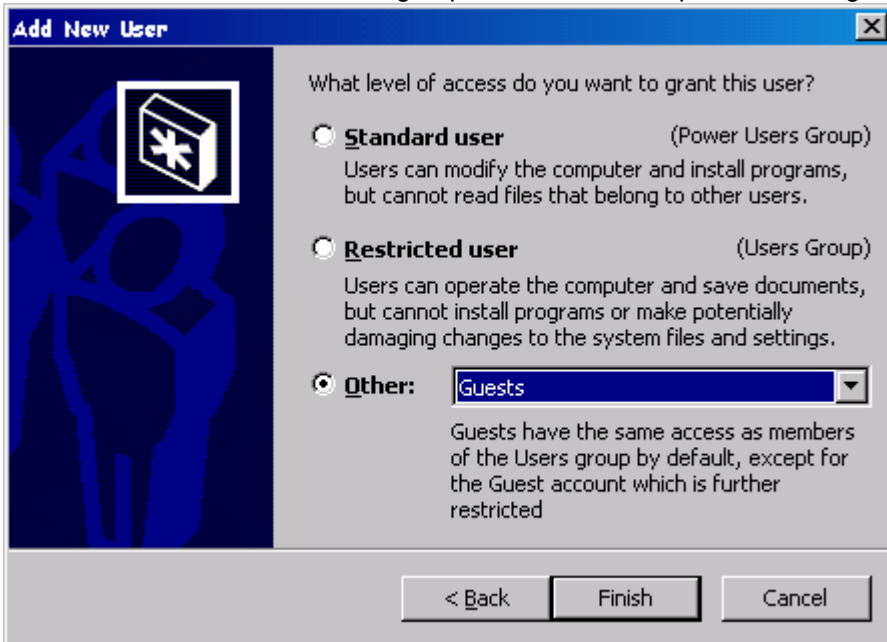


Figure 3.2.1.4 Add New User Other

Click “Finish” to add the users. See the figure below for a view of the “Users and Passwords” window with the added user.

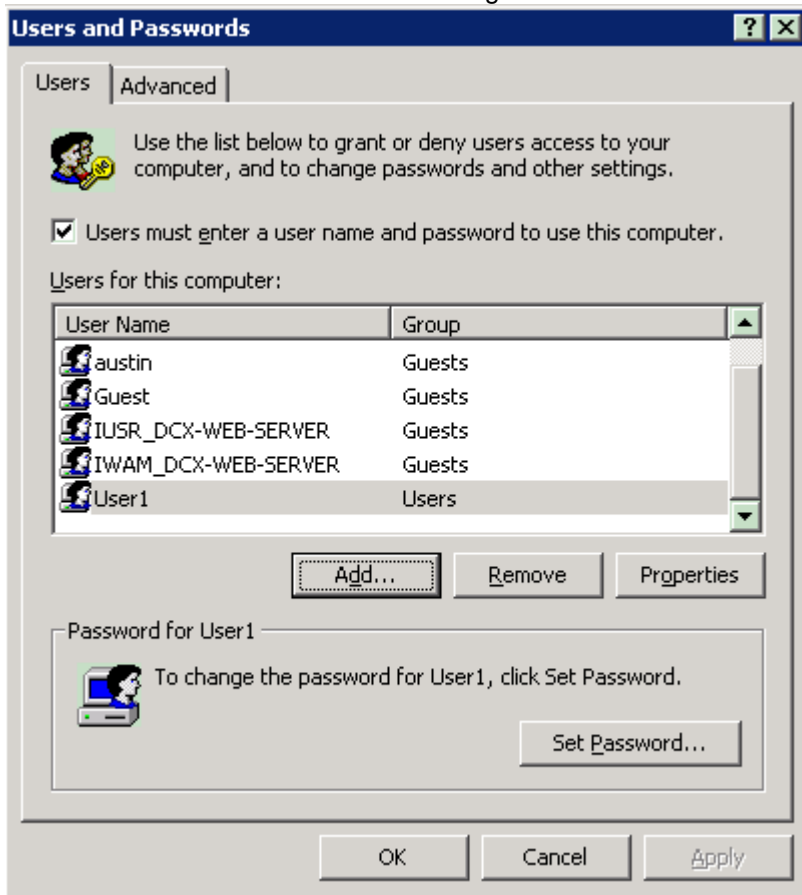


Figure 3.2.1.4 Users and Passwords added user

Click “Ok” to close the “Users and Passwords” window.

This concludes the procedure for adding users to the computer.

3.2.2 Terminal Server Software

Install **46745466-01**(Terminal Server Software CD) by using the **46745466-521**(Document on CD).

3.2.3 TCP Relay Software

Install **46745465-01**(TCP Relay CD) by using the **46745465-521**(Document on CD)

3.2.4 Web Based Control System Software

Install **46745464-01** or **-02**(Web Based Control System CD) by using the **46745465-521**(Document on CD). The version will depend on which Web Based Control System kit was shipped.

3.2.5 Configure Internet Information Services (IIS) for the Web Server.

This section will describe the procedure for configuring the Web Server and the FTP server.

Open “Add/Remove Programs” by double clicking on “My Computer” then double click on “Control Panel” and double click on “Add/Remove Programs”.

Select “Add/Remove Windows Components”.

If "Internet Information Services (IIS)" is installed (checked) open "Computer Management" by double clicking on "My Computer" then double click on "Control Panel", double click on "Administrative Tools" then double click on "Computer Management". If "Internet Information Services (IIS)" is not installed (unchecked), check it and click the "Next>" button. See figure below for a view of the "Windows Components Wizard" window.

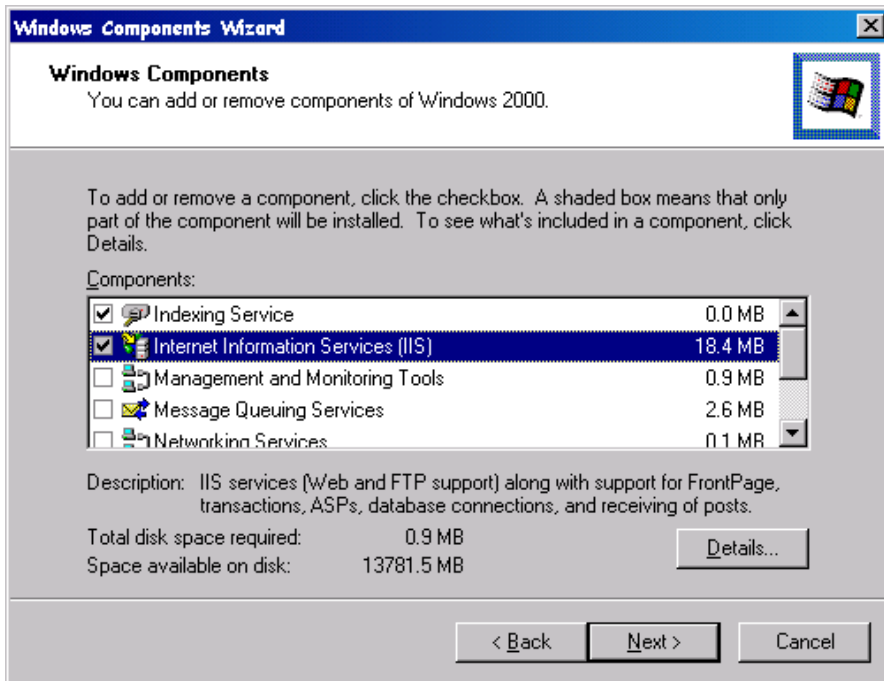


Figure 3.2.5.1 Windows Components Wizard

Insert the Windows® 2000 Installation CD when prompted. Click "Ok" and wait for the installation of IIS to finish.

Open "Computer Management" by double clicking on "My Computer" then double click on "Control Panel", double click on "Administrative Tools" then double click on "Computer Management".

See figure below for a view of the Computer Management window.

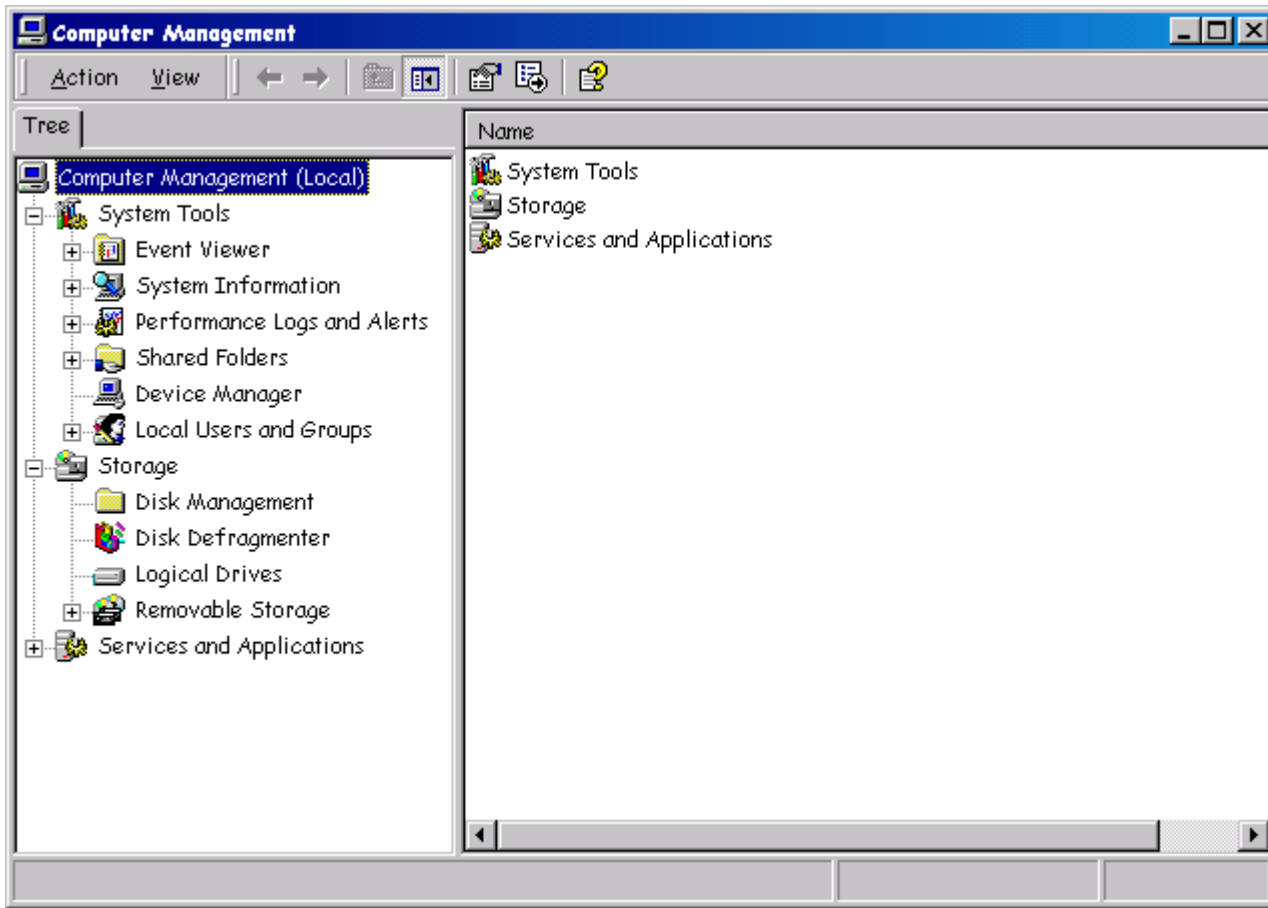


Figure 3.2.5.2 Computer Management Window

Expand "Services and Applications".

Double click on "Internet Information Services". See **Figure 3.2.5.3** on the next page for a view of the expanded "Computer Management" window.

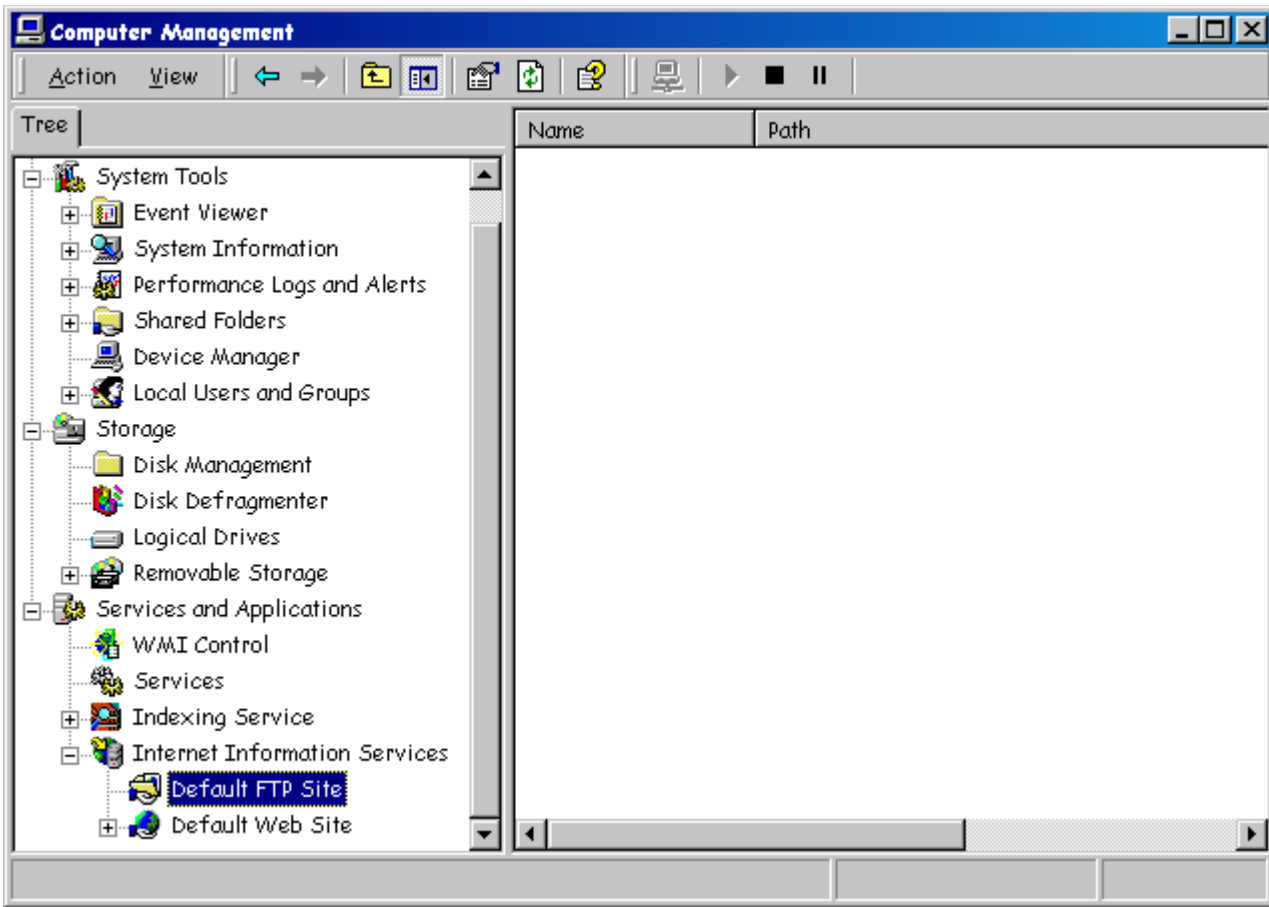


Figure 3.2.5.3 Expanded Computer Management

Right Click on “Default Web Site”, select “Properties”, select “Home Directory” tab, click the “Browse” button.

Select “C:\Program Files\Thomcast\Web Root\Web” or the location of the Web Based Control System software installed in step 3.2.3 plus \web. See figure below for a view of “Default Web Site Properties” window.

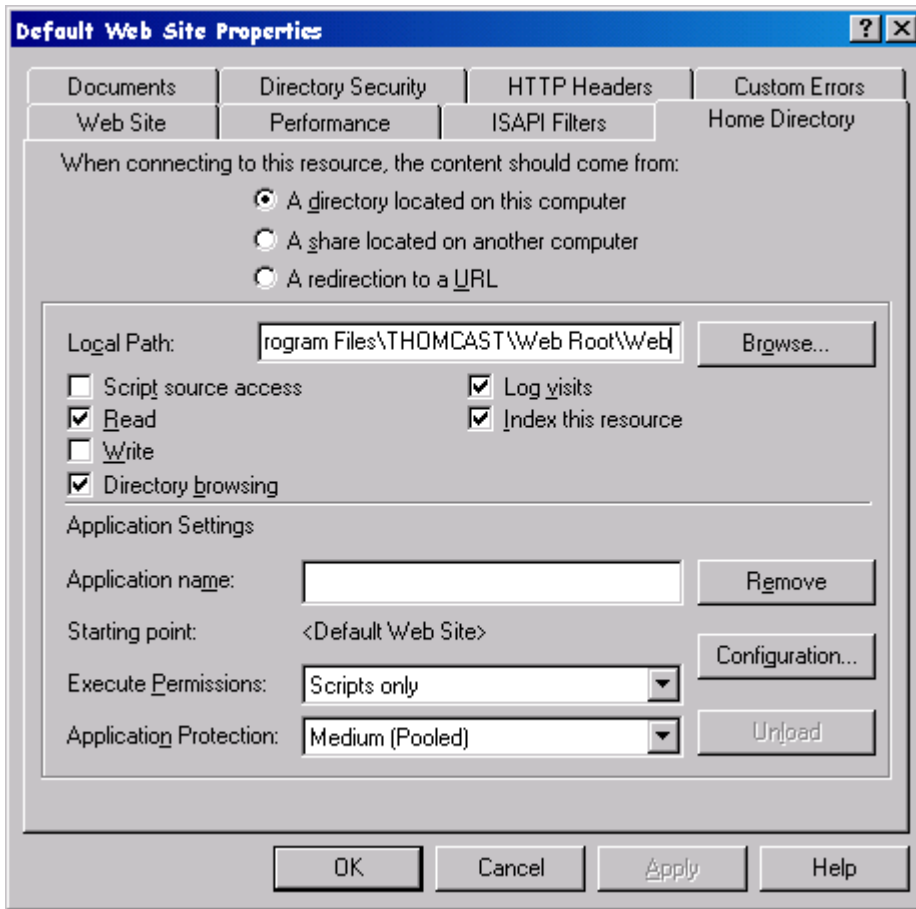


Figure 3.2.5.4 Default Web Site Properties

While in Default Web Site Properties, click the “Documents” tab and click the “Add” button. See figure below for a view of the “Add Default Document” window.

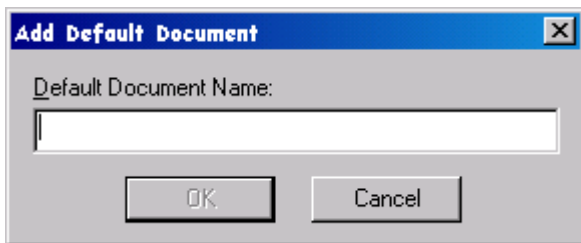


Figure 3.2.5.5 Add Default Document

Type "Default.shtml" (without quotes) and click "Ok". See figure below for a view of the "Default Web Site Properties" window.

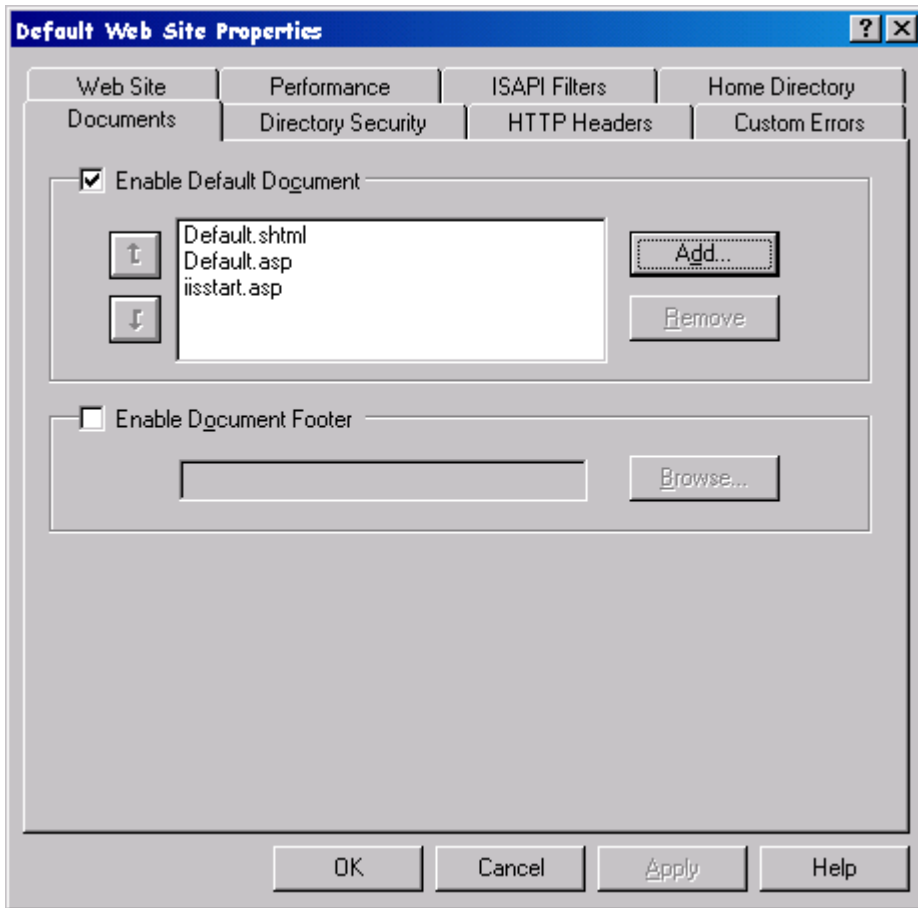


Figure 3.2.5.6 Default Web Site Properties

Click "OK" to apply and close the "Default Web Site properties" window.

In the “Computer Management” window, expand “Default Web Site”. See figure below for a view of the expanded “Computer Management” window.

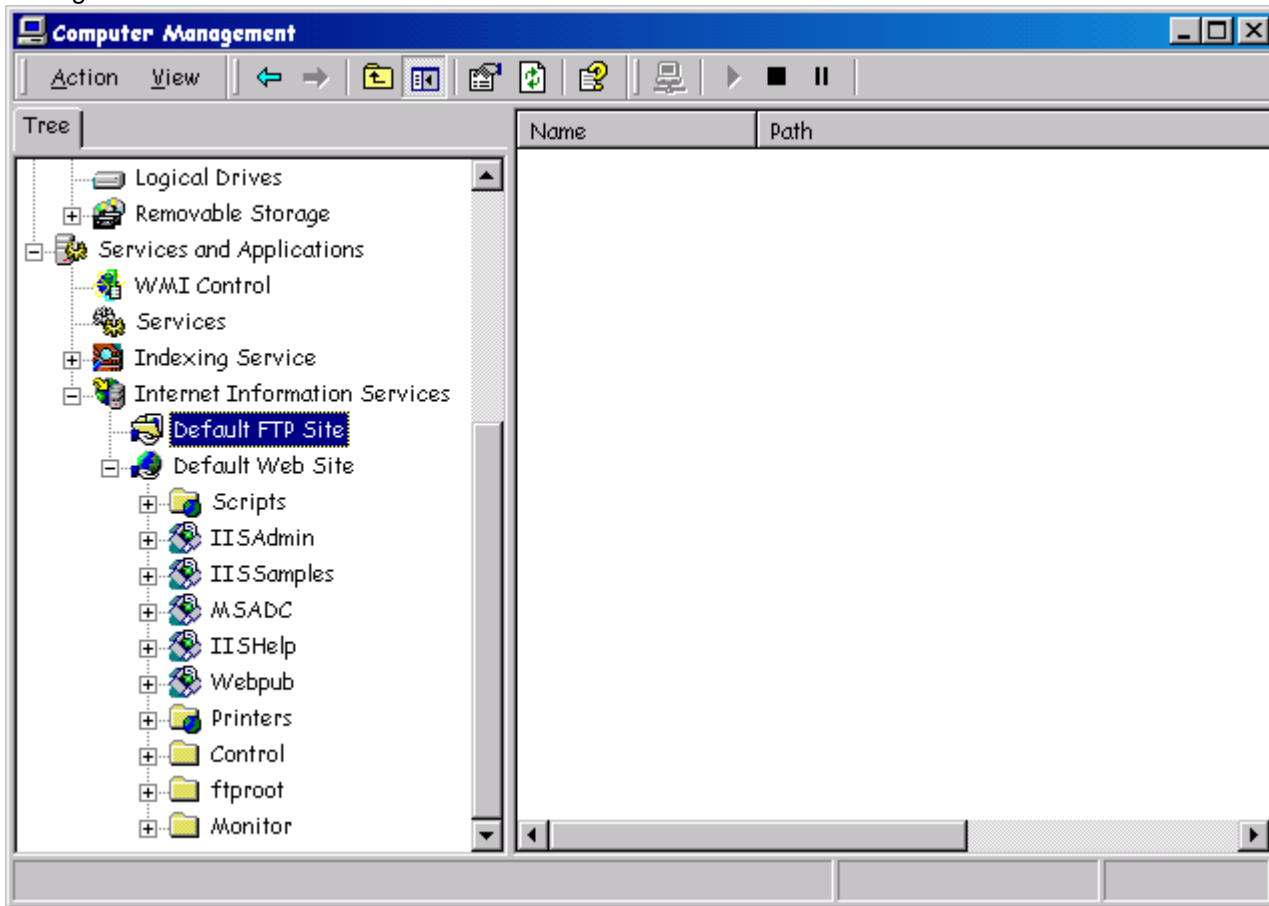


Figure 3.2.5.7 Default FTP Site

Right Click on the “Control” folder, select “Properties”, select the “Directory Security” tab, and click the “Edit” button. See figure below for a view of the “Authentication Methods” window.

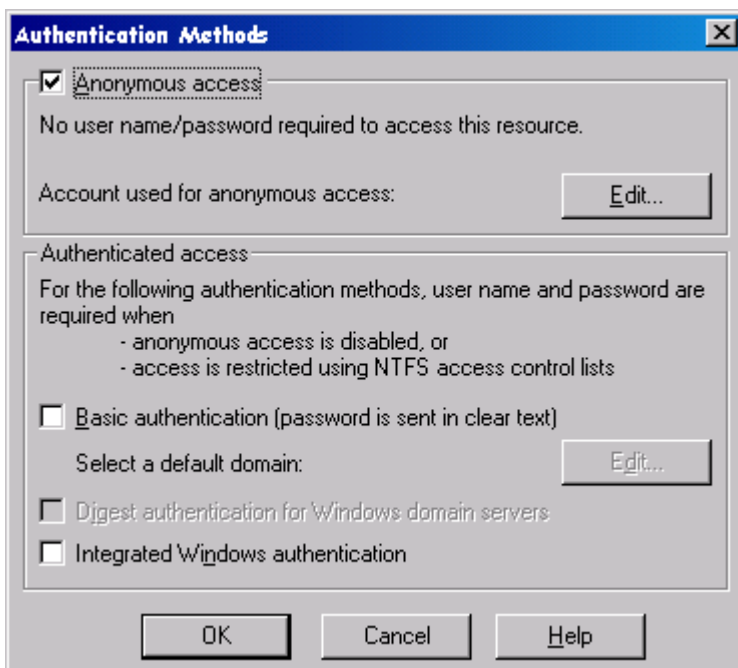


Figure 3.2.5.8 Authentication Methods

Uncheck “Anonymous access”.

Check "Integrated Windows authentication". See figure below for a view of the updated "Authentication Methods" window.

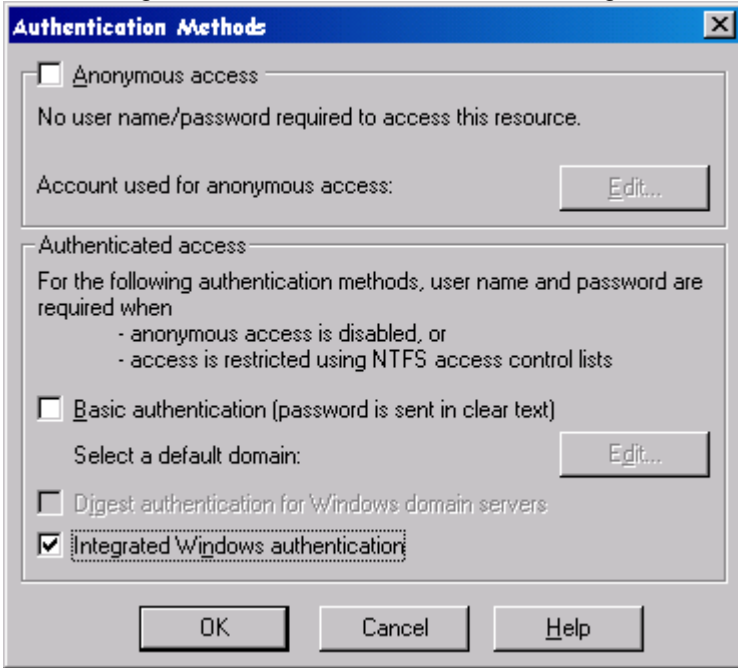


Figure 3.2.5.9 Integrated Windows authentication

Click "Ok" to apply, and close the "Authentication Methods" window.

Expand the "Control" folder.

Right click on "Image" folder, select "Properties", then select the "Directory Security" tab, and click the "Edit" button.

Check "Anonymous access" box

Uncheck the "Integrated Windows authentication" box. See below for a view of the "Authentication Methods" window for the image folder.

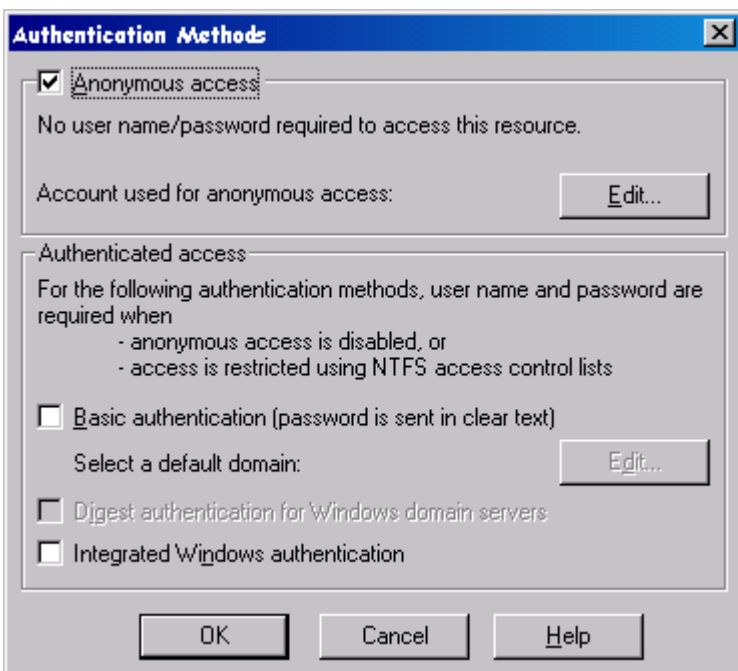


Figure 3.2.5.10 Anonymous access

Click "Ok" to apply and close the "Authentication Methods" window.

Click "Ok" to apply and close the "images Properties" window.

Right click on the “Default FTP Site” and select “Properties”

Select the “Home Directory” tab and click the “Browse” button.

Select “**C:\Program Files\Thomcast\Web Root\Web\ftproot**” or the location of the Web Based Control System software installed in **step 3.2.3** plus **\web\ftproot**. See figure below for a view of “Default FTP Site Properties” window.

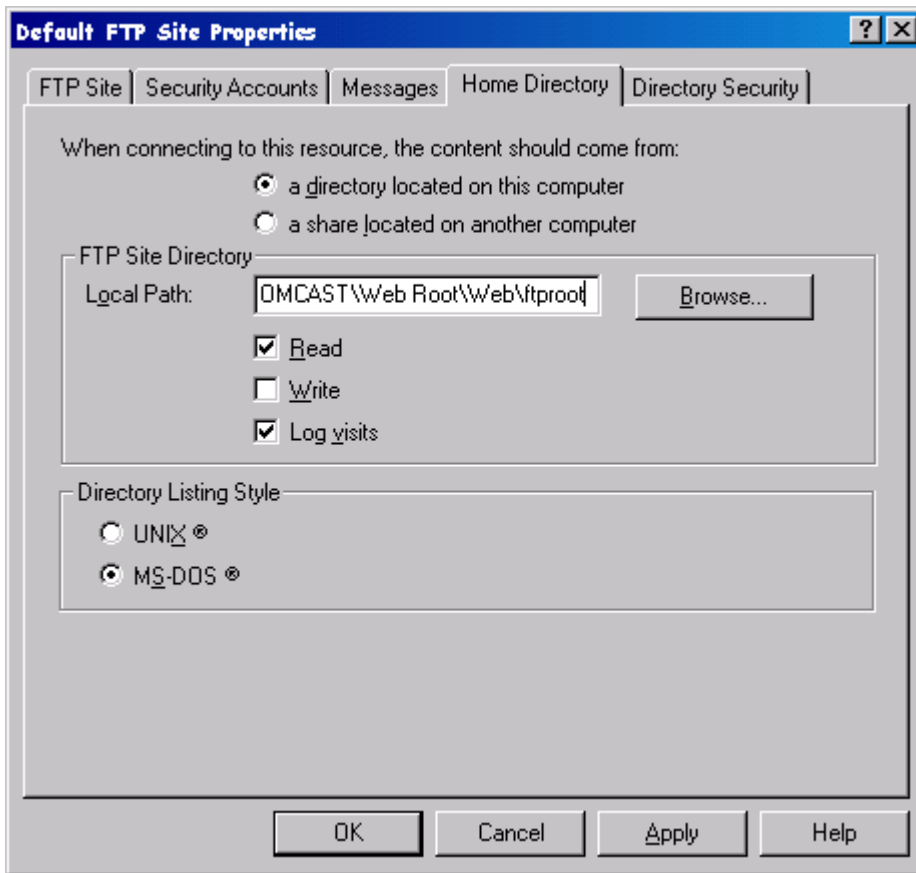


Figure 3.2.5.11 Default FTP Site Properties

Click “Ok” to apply and close the “Default FTP Site Properties” window.

Close the “Computer Management” window.

This concludes the setup of the Web Based Control System Software.

3.2.6 Transmitter LAN Configuration

This section describes the procedure for configuring the transmitter LAN.

Open “Network and Dial-up Connections” by double clicking on “My Computer” then double click on “Control Panel” and then double click on “Network and Dial-up Connections”.

Disconnect both CAT5 network cables from the PC.

Connect only the CAT5 network cable connecting the PC to the Terminal Server. See figure below for a view of the “Network and Dial-up Connections” window.

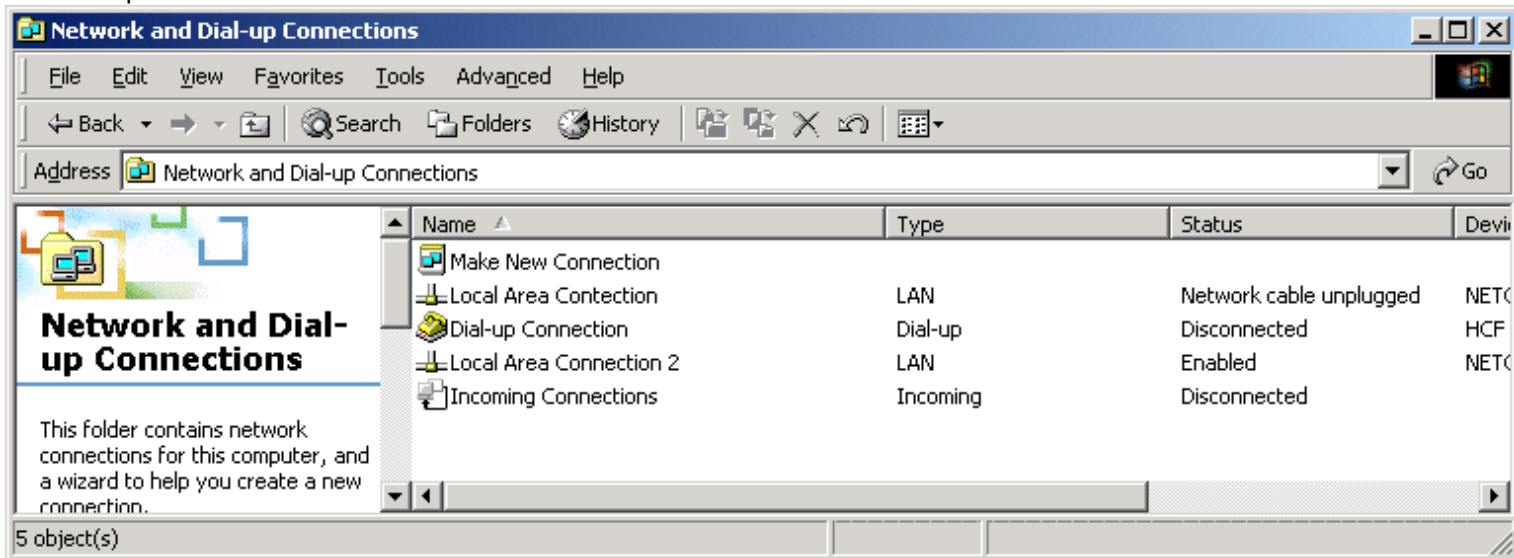


Figure 3.2.6.1 Network and Dial-up Connections

Rename the “Local Area Connection” that indicates “Enabled” under the “Status” portion of the “Network and Dial-up Connections” to “Transmitter LAN” by right clicking on the connection and selecting “Rename”.

Rename the other connection to “Company LAN” by right clicking on the connection and selecting “Rename”. See figure below for a view of the “Network and Dial-up Connections” window.

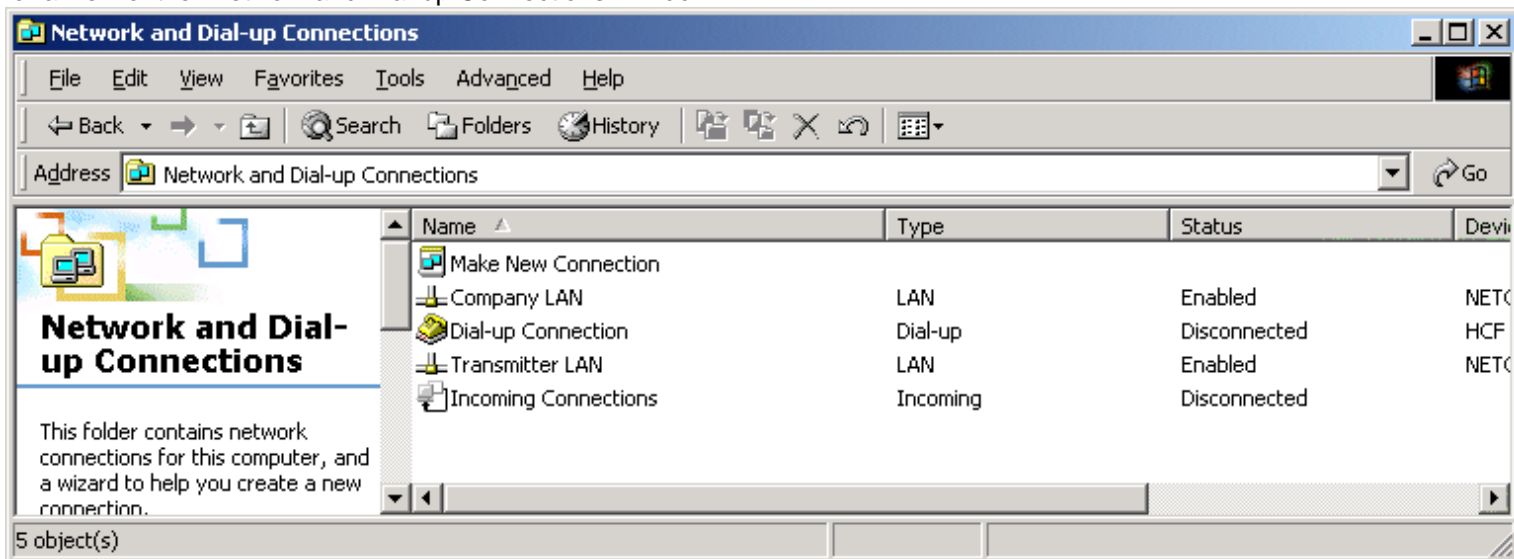


Figure 3.2.6.2 Network and Dial-up Connections Rename

Right Click on “Transmitter LAN”, select ”Properties”. See figure below for a view of the “Transmitter LAN” window.

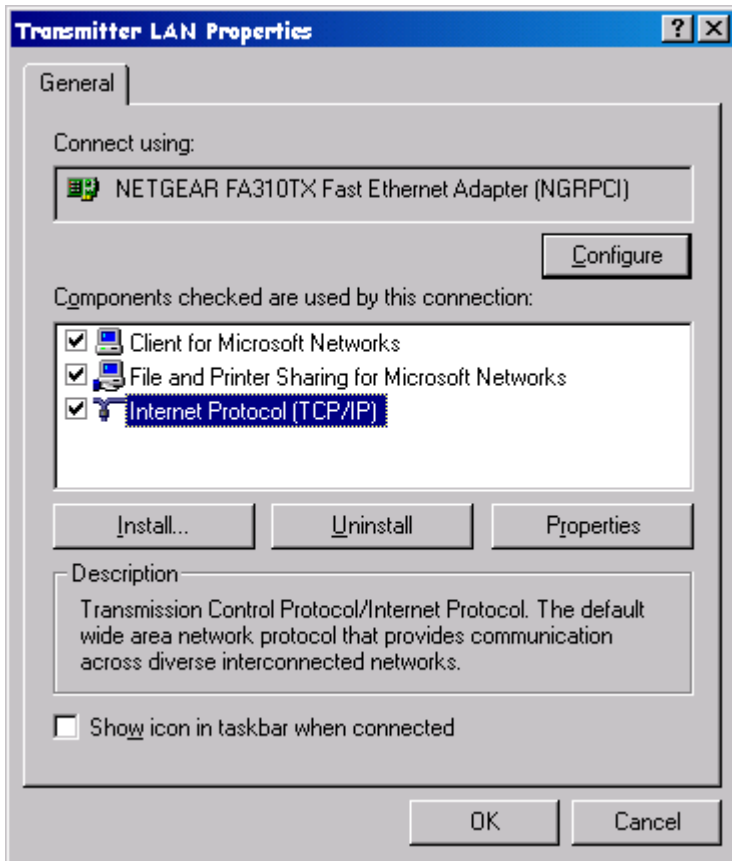


Figure 3.2.6.3 Internet Protocol (TCP/IP)

Select “TCP/IP”, click on “Properties” button.

Select “Use the following IP address”.

Enter 192.168.1.1 in the “IP Address” edit box.

Enter 255.255.255.0 in the “Subnet mask” edit box.

See **Figure 3.2.6.4** on the following page for a view of the configured “Internet Protocol (TCP/IP)” window.

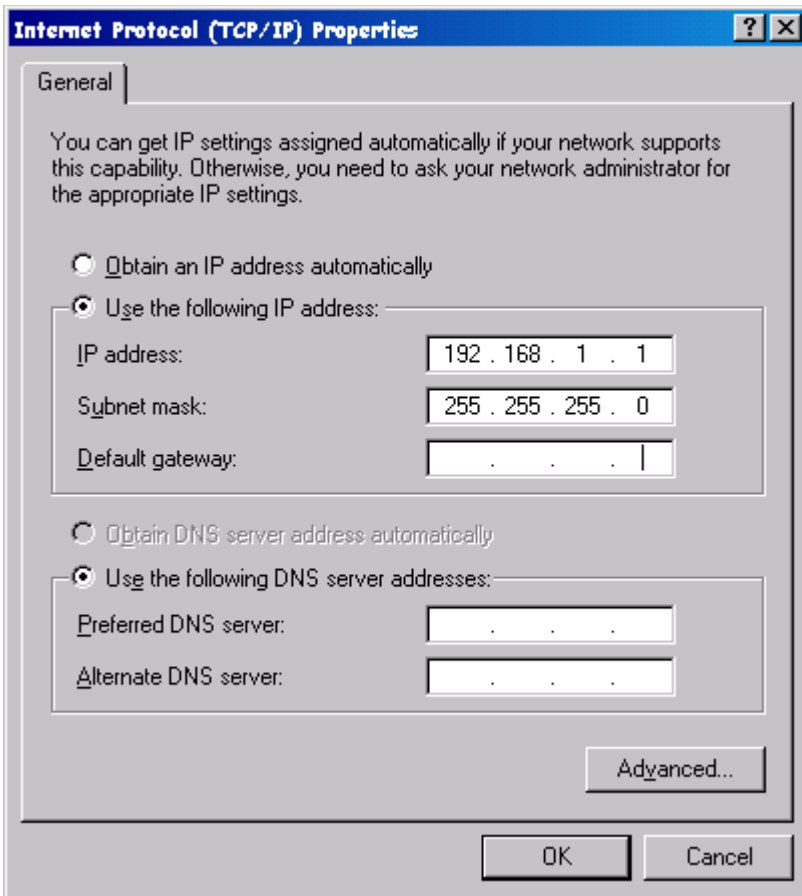


Figure 3.2.6.4 DNS server addresses

Click "OK" to apply and close to Internet Protocol (TCP/IP)" window.

Click "OK" to apply and close the "Transmitter LAN" window.

This concludes the Transmitter LAN Configuration procedure.

3.2.7 Company LAN Configuration

Open "Network and Dial-up Connections" by double clicking "My Computer" then double click on "Control Panel" and double click on "Network and Dial-up Connections".

Configure "Company LAN" connection (see Network Administrator for guidelines)

Close all windows

This concludes the Company LAN Configuration procedure.

3.2.8 Dial-up Connection Configuration (if used)

This section describes the procedure for allowing the Web Server PC to accept incoming calls.

Open "Network and Dial-up Connections" by double clicking on "My Computer" then double click "Control Panel" then double click "Network and Dial-up Connections".

Double click on "Make New Connection".



Figure 3.2.7.1 Network Connection Wizard

Click "Next>" and select "Accept incoming connections".

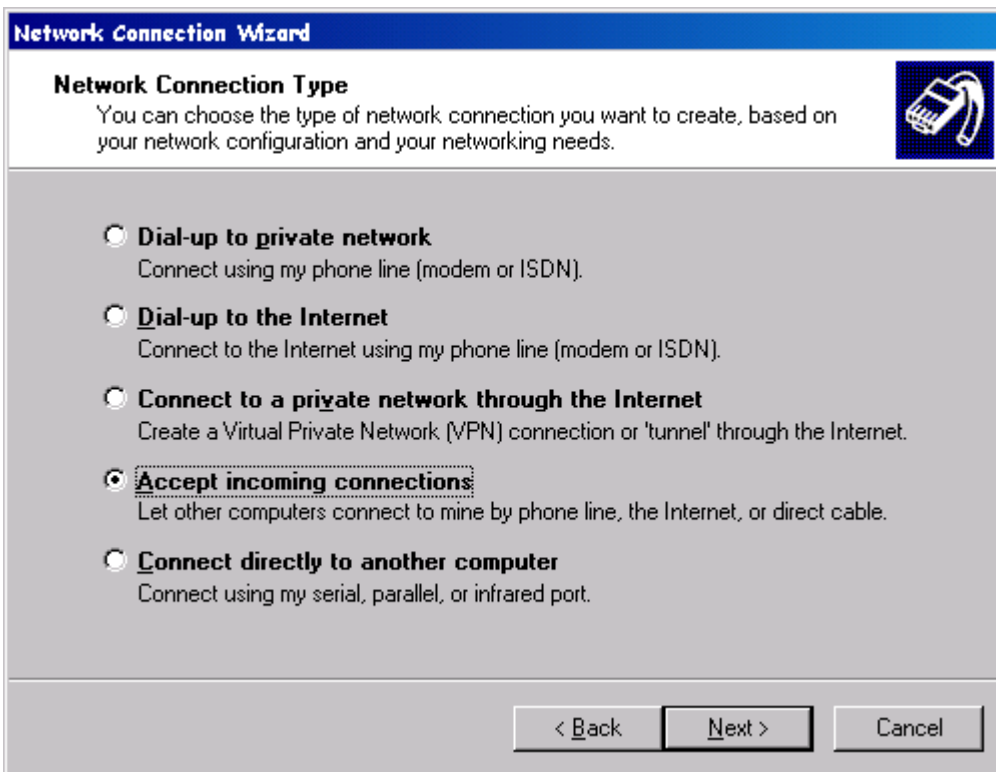


Figure 3.2.7.2 Network Connection Type

Click "Next>" and select the modem.

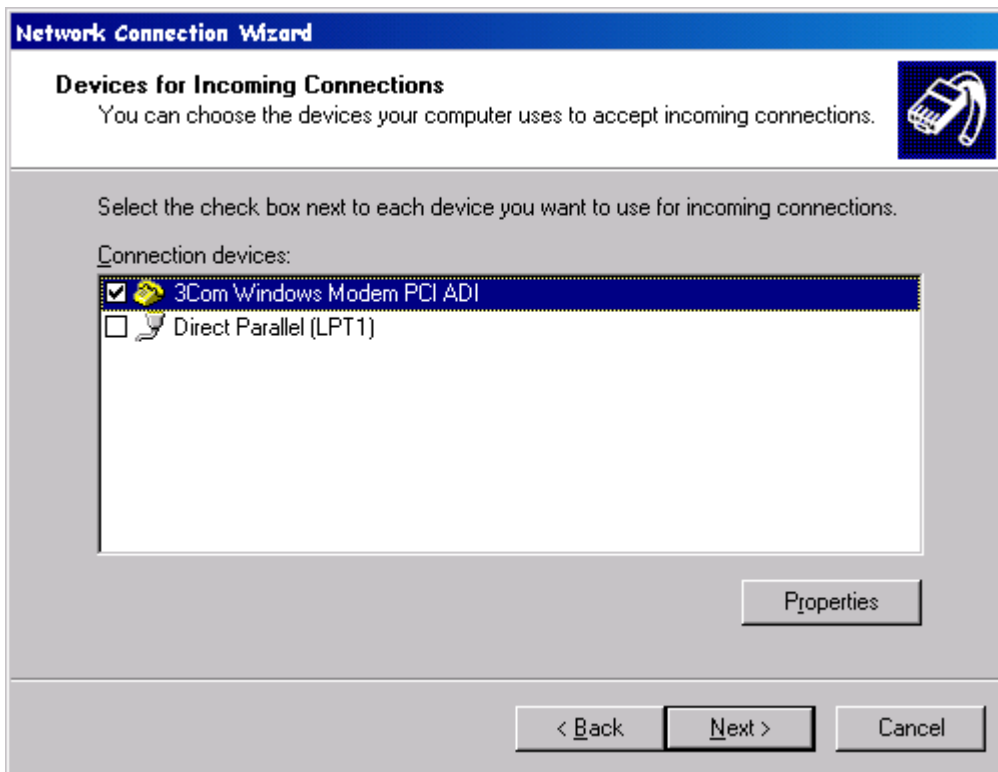


Figure 3.2.7.3 Devices for Incoming Connections

Click "Next>"

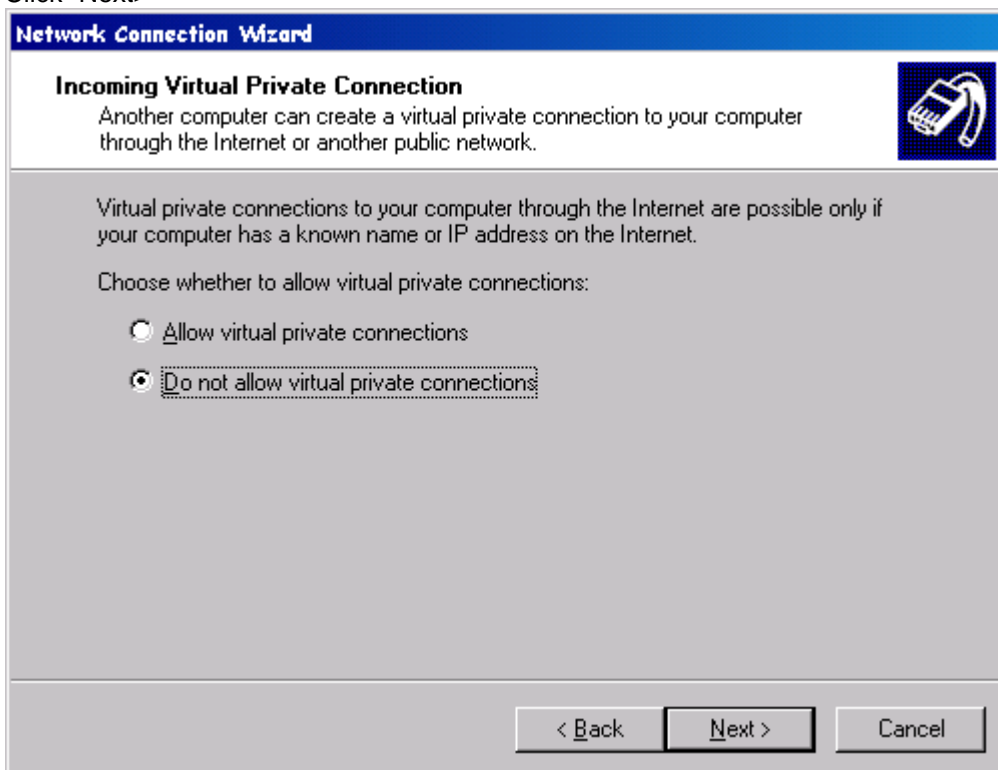


Figure 3.2.7.4 Incoming Virtual Private Connection

Click “Next>” and select the “User requiring access to this connection”.

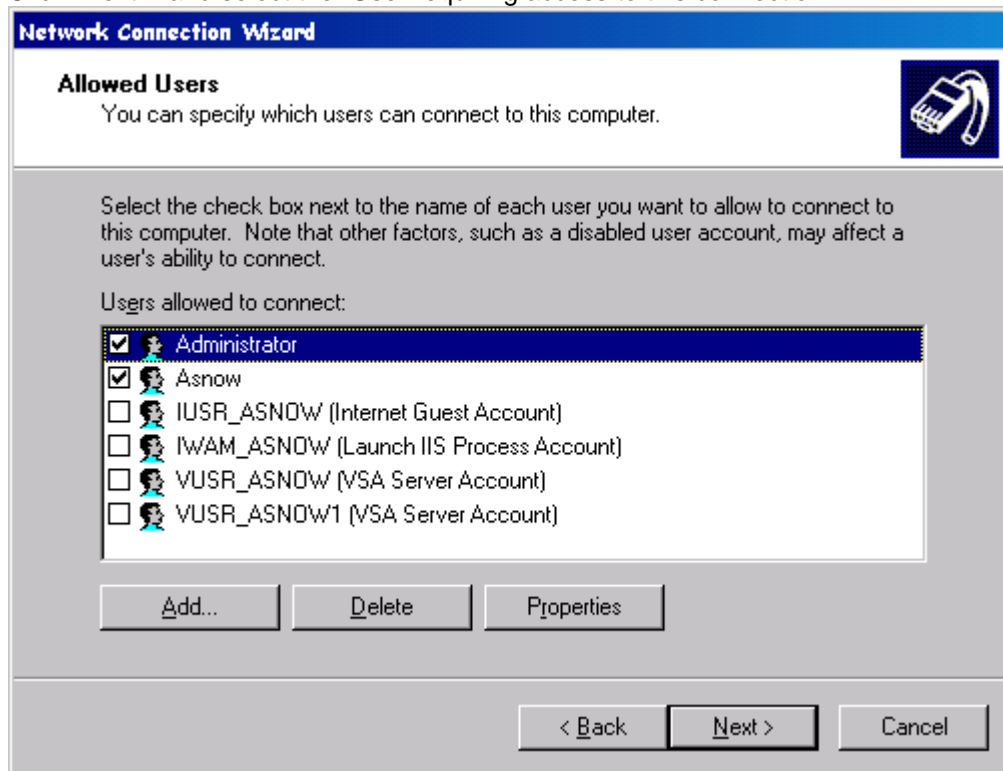


Figure 3.2.7.5 Allowed Users

Click “Next>” and select “Internet Protocol (TCP/IP) and click “Properties”

Select “Specify TCP/IP addresses”

Enter 192.168.1.10 in the “From” edit box.

Enter 192.168.1.11 in the “To” edit box.

Check the box “Allow calling computer to specify its own IP address”. See below for a view of the configured “Incoming TCP/IP Properties” window.

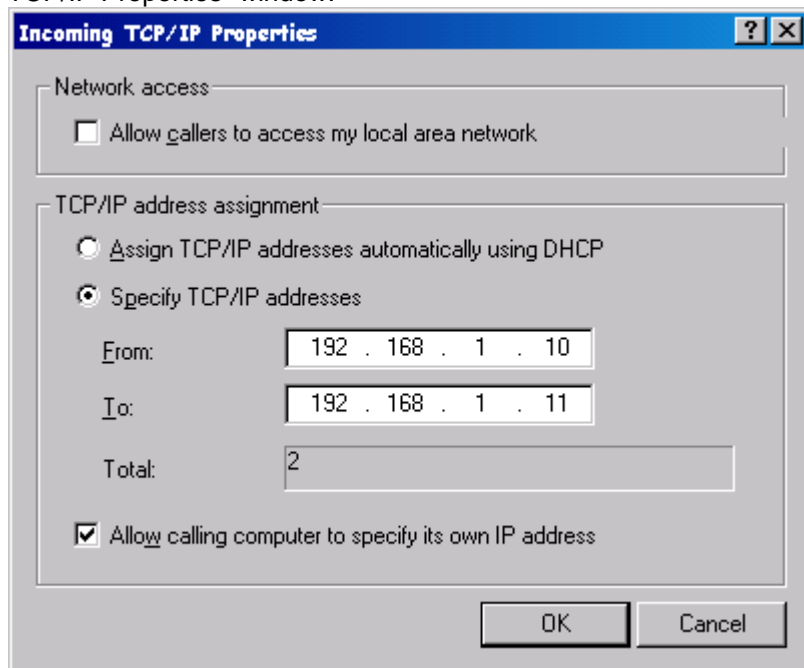


Figure 3.2.7.6 Incoming TCP/IP Properties

Click "OK" to apply and close the "Incoming TCP/IP Properties" window.

Click "Next>"

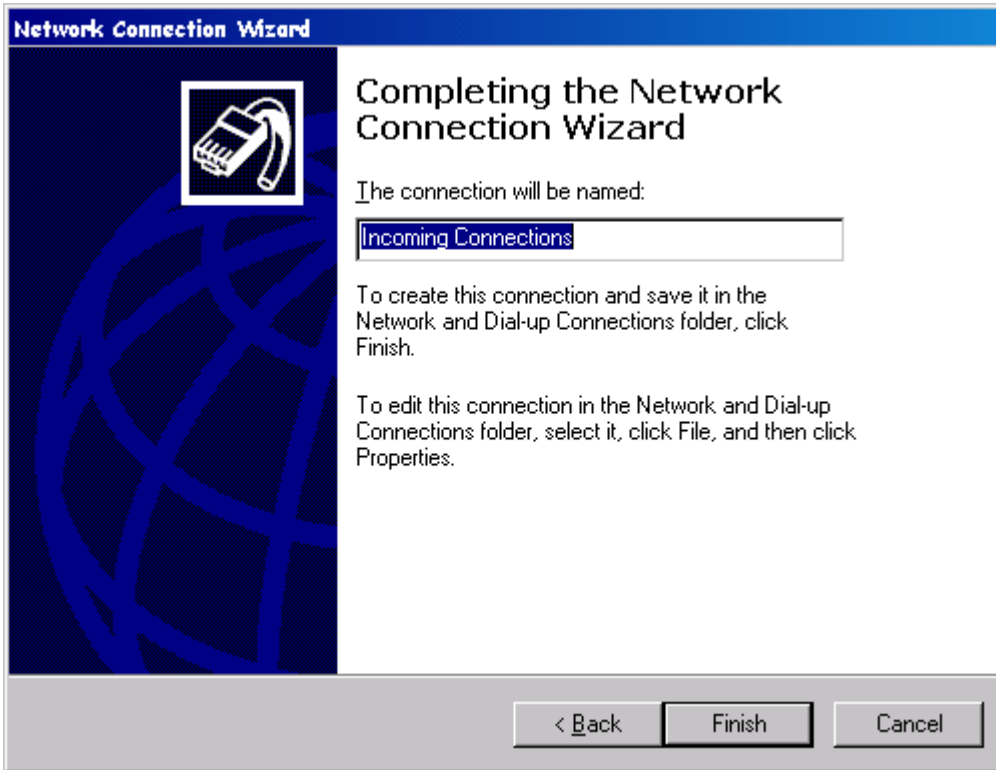


Figure 3.2.7.7 Incoming Connections

Click "Finish" to apply and close the "Network Connection Wizard".

This concludes the Dial-up Connection Configuration procedure.

3.2.9 Java Plug-In Installation

The web pages running the applets that allow the Control and Monitoring of the transmitter, uses Java 2 technology. A Java Plug-in is required to view the pages. The Java plug-in is available on the Web Server PC's FTP site. This file can be copied, and will need to be installed on any computer that will be used to view the web pages on the Web Server PC. The Java Plug-in can be installed as follows:

Open Internet Explorer.

Enter the FTP://<Web Server computer name> or FTP://192.168.1.1 in the address bar of the browser. This will display the contents of the FTP site running on the Web Server Computer. See below for a view of the FTP site contents.

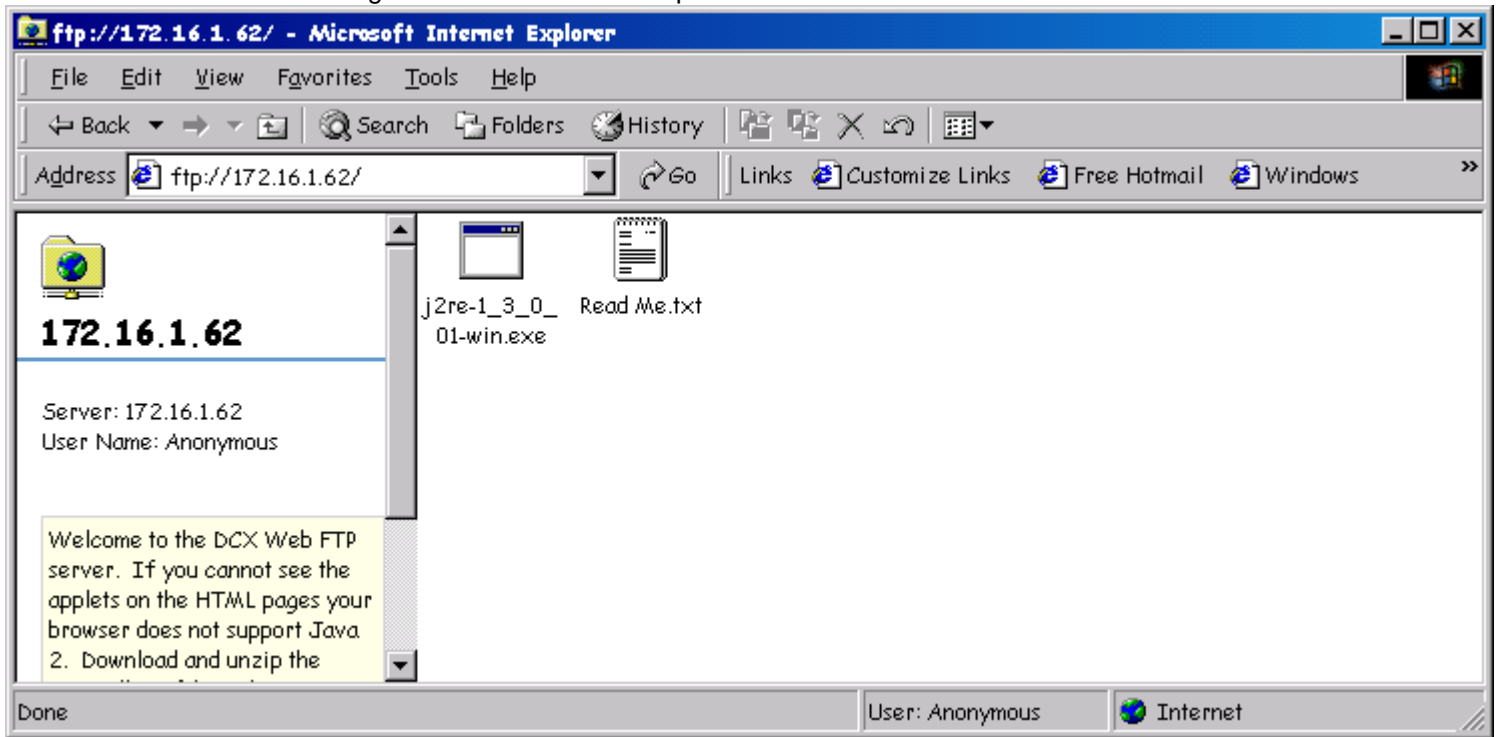


Figure 3.2.8.1 FTP

Double click the **j2re-1_3_0_01-win.exe** file.

Select **Run this program from its current location**, click **Ok** and follow the instructions.

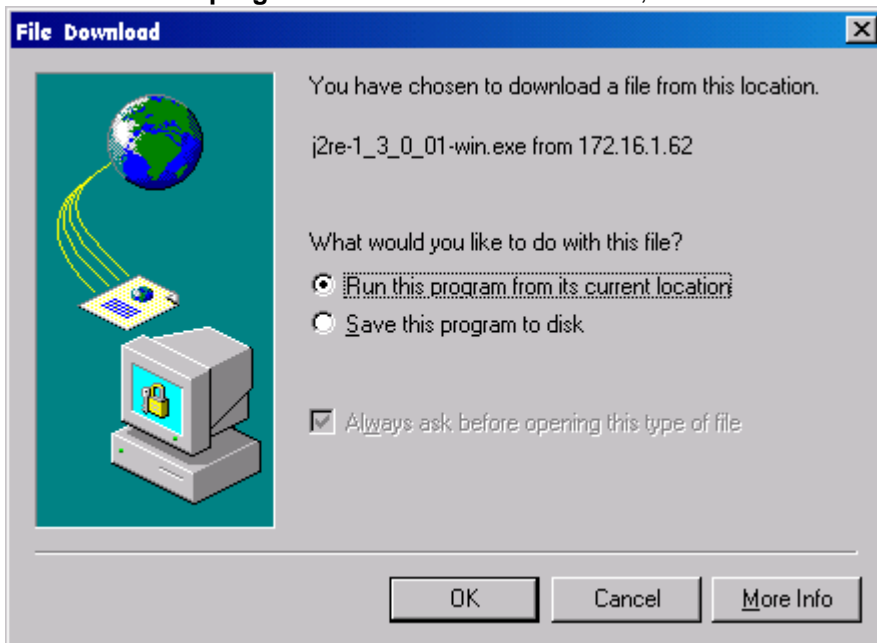


Figure 3.2.8.2 File Download

This concludes the Java Plug-in installation procedure.

3.2.10 TCP Relay Security Setup

This section will describe the procedure for adding security to the TCP Relay program. **This portion of the setup procedure must be completed with the customer present. They must provide the IP Addresses that are allowed and must fully understand this procedure.** The program will function after the installation of the software in **step 3.2.3** by allowing any IP address to connect to the Web Server PC. The TCP Relay program can be configured to allow only certain IP addresses to connect to the Web Server PC. The following are the details to add security to the TCP Relay program. (Note: to return security to normal, reinstall the TCP Relay program and follow the procedure in **step 3.2.3**).

Run the Regedit program by going the “Start” Menu and selecting “Run”. Type “**Regedit**” in the Open edit box and clicking “Ok”. See below for a view of the “Run” window.

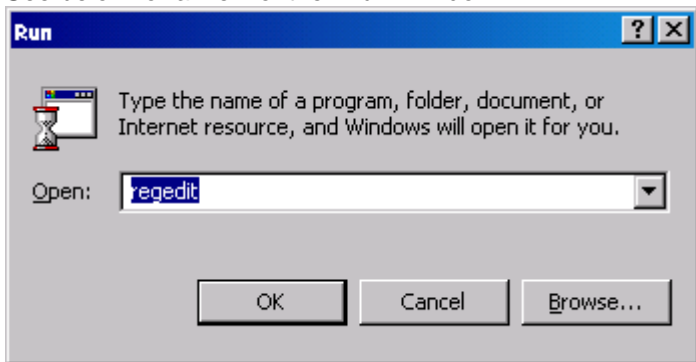


Figure 3.2.9.1 Run

Expand “HKEY_LOCAL_MACHINE”. See below for a view of the “Registry Editor” window.

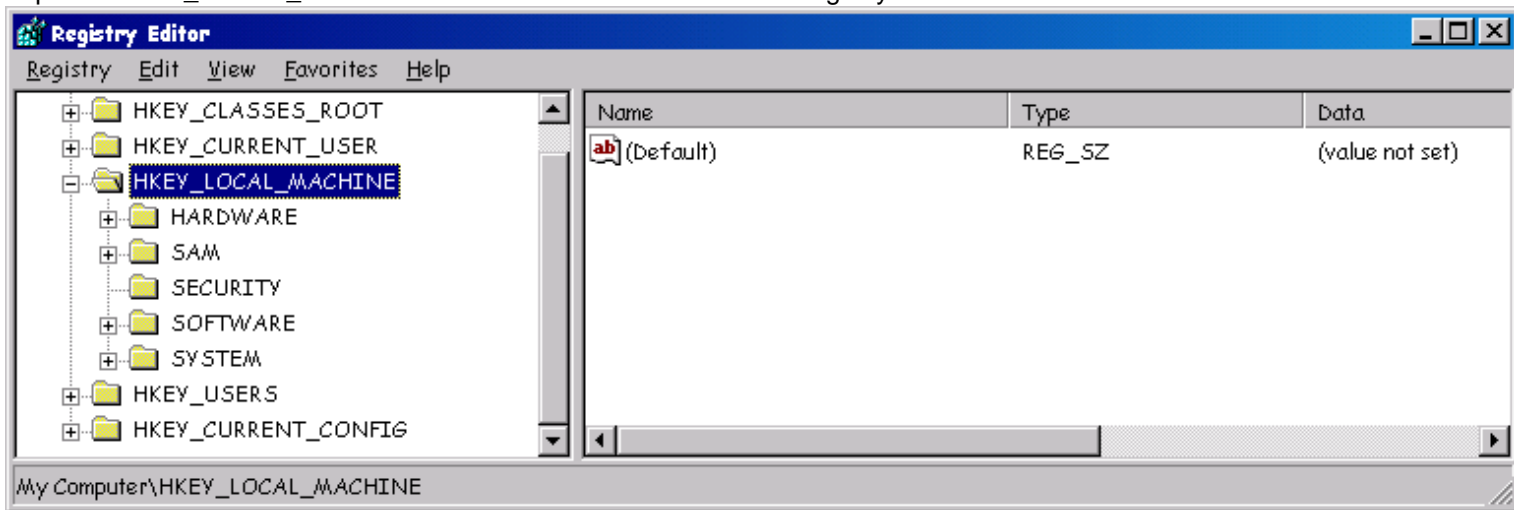


Figure 3.2.9.2 Registry Editor

Expand "SOFTWARE". See below for a view of the "Registry Editor" window.

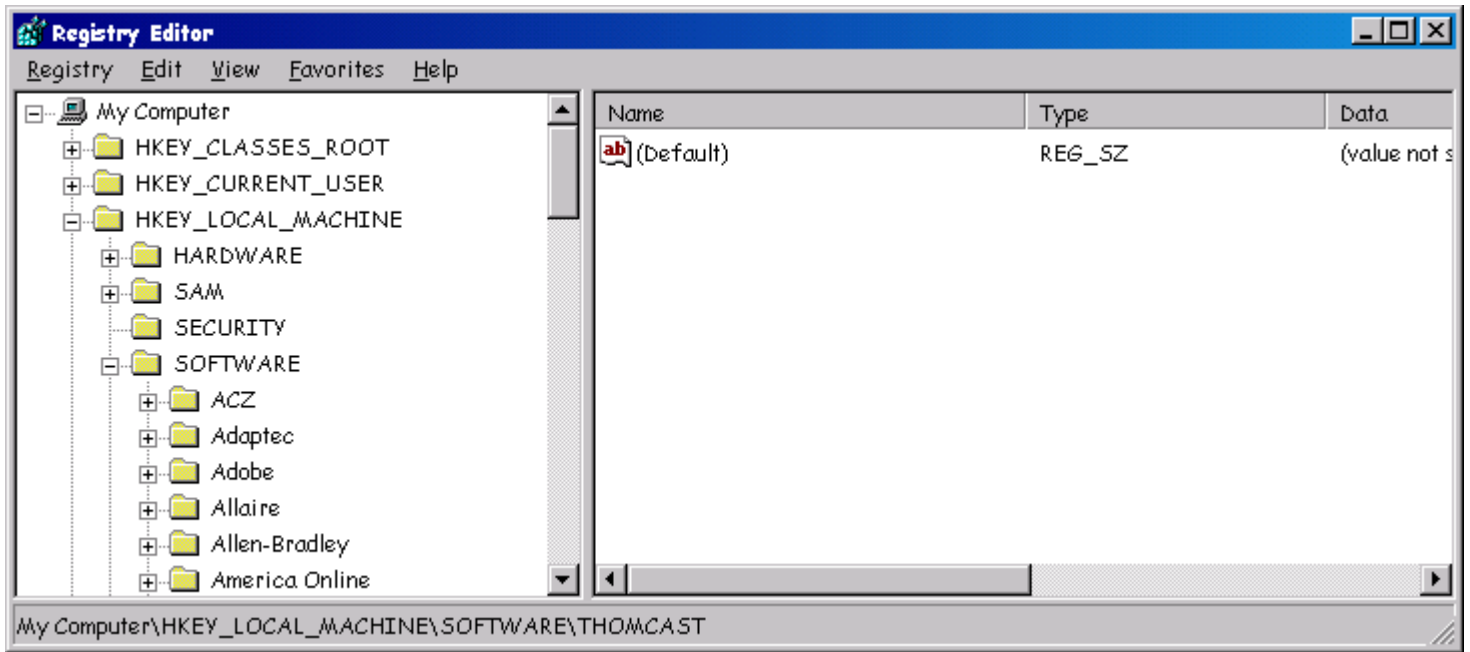


Figure 3.2.9.3 Registry Editor Software

Expand "THOMCAST". See below for a view of the "Registry Editor" window.

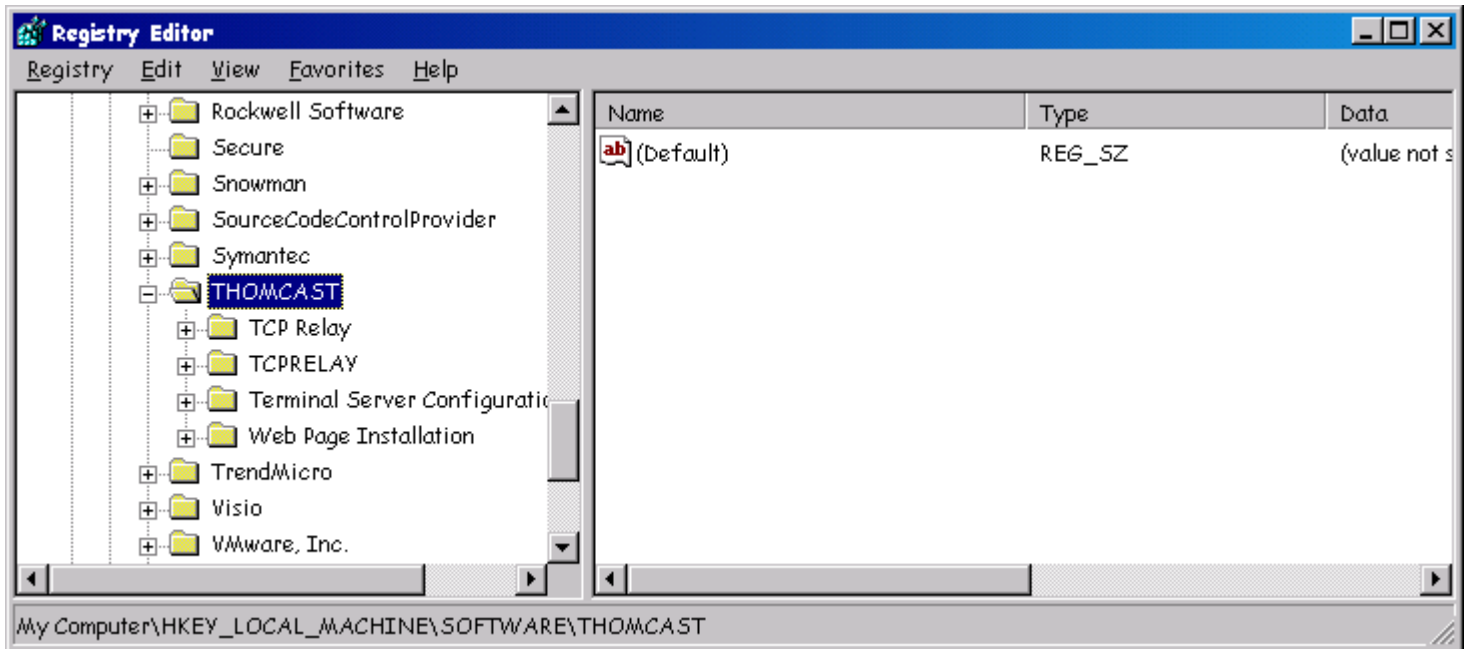


Figure 3.2.9.4 Registry Editor THOMCAST

Expand "TCPRELAY". See below for a view of the "Registry Editor" window.

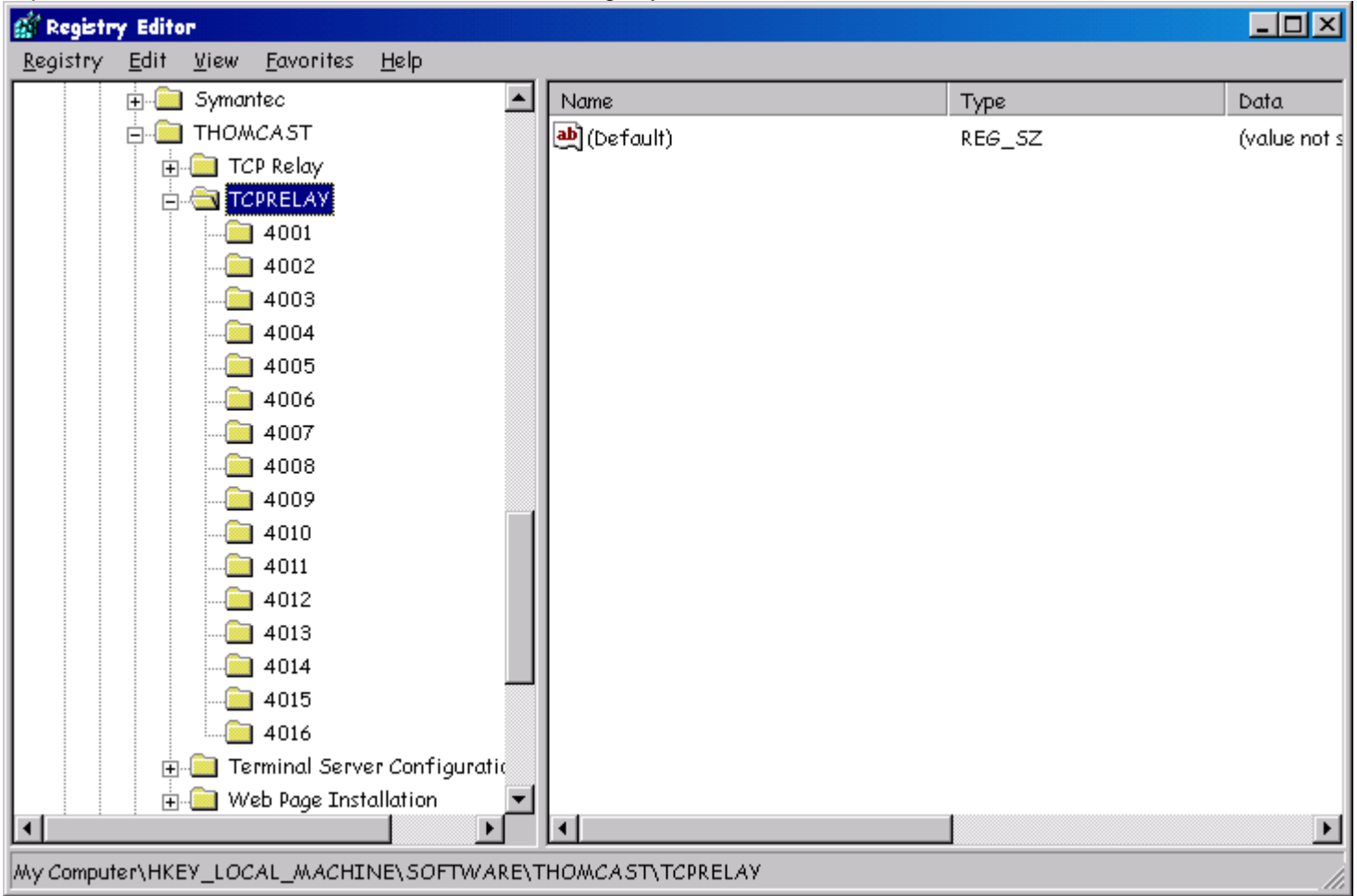


Figure 3.2.9.5 Registry Editor TCPRELAY

Click on the "4001" folder. Change the String Value to "Allow" IP address(s) of the computer(s) allowed to access the Web Based Control System. The value (*. *. *. *) allows all IP addresses. The value can be 192(*. *. *. *) or 192.168.1.1, the * means all IP addresses that fall within this range will be allowed. Be sure to include all IP addresses that are present on the Web Server PC including 127.0.0.1, the default loop-back adapter.

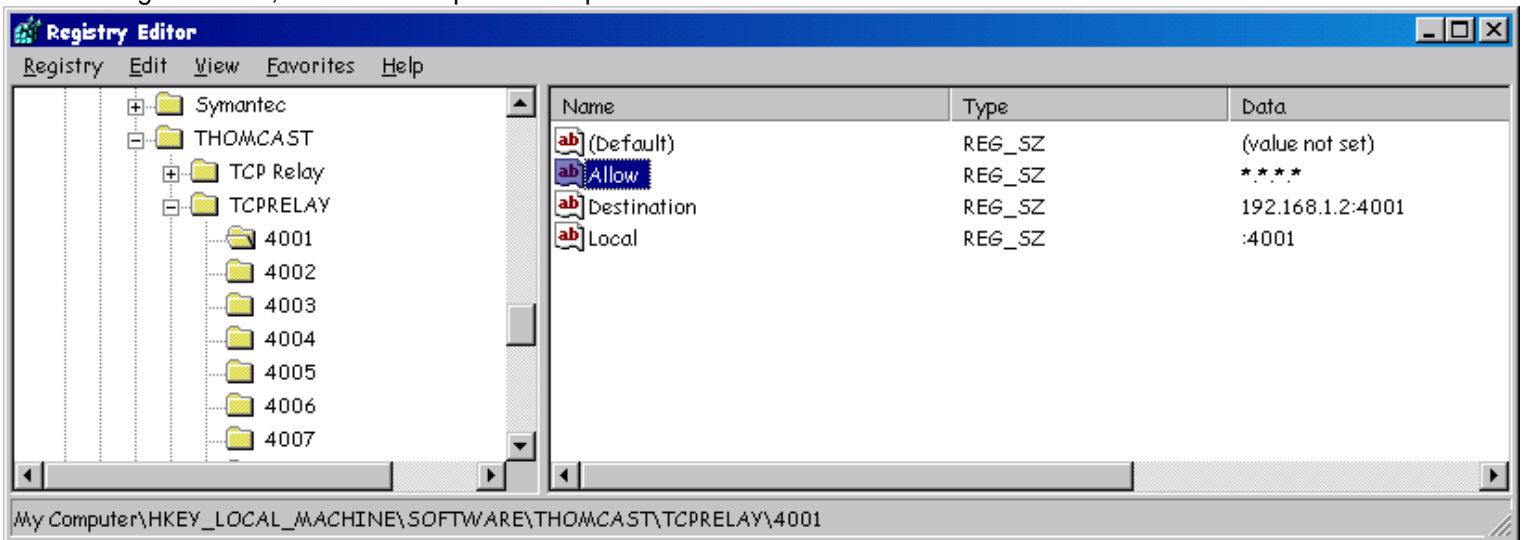


Figure 3.2.9.6 Registry Editor Allow

In the follow example IP addresses 127.0.0.1, 172.16.1.230, and 192.168.1.0 to 192.168.1.255 will be allowed. The total number of characters in the “**Allow**” string limits the number of allowable IP addresses. It must be less than **240 characters**. In this example there are 34 characters used. Also, the IP address must be separated by a “;” (semi-colon).

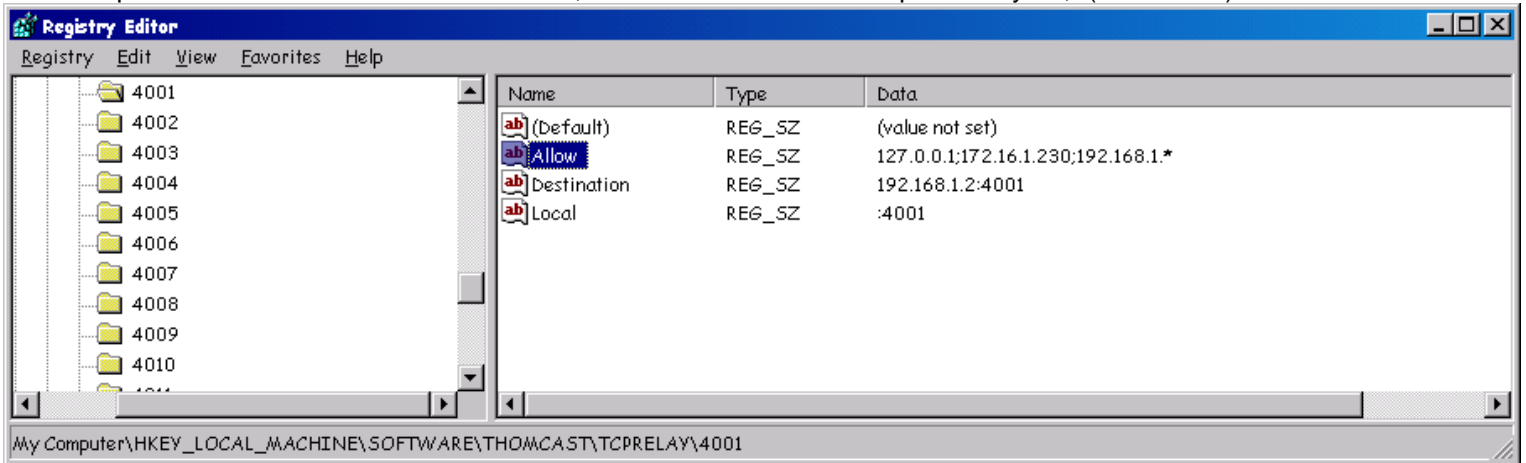


Figure 3.2.9.6 Registry Editor Examples

Complete the previous step for each port number, 4001 to 4016.

Reboot the Web Server Computer to make the changes take effect.

This concludes the TCP Relay Security Setup procedure.

3.2.11 Equinox EquiView installation

This section describes the procedure for installing Equinox’s EquiView software. EquiView software is loaded on a 3.5” floppy disk and is supplied in the box with the Terminal Server. The Terminal Server part number is **607880-01** (16 port version) and **607877-01** (8 port version).

Insert the EquiView floppy into the floppy drive.

Click on the “Start” menu and select “Run”. See below for a view of the “Run” window.

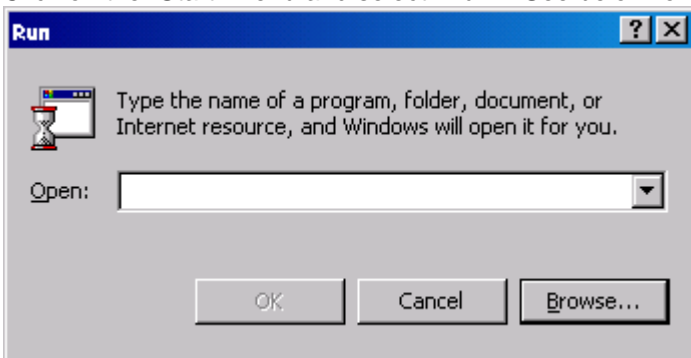


Figure 3.2.9.7 Equinox Run

Click "Browse..." and select the "install.exe" file located on the EquiView floppy. See below for a view of the "Browse" window.

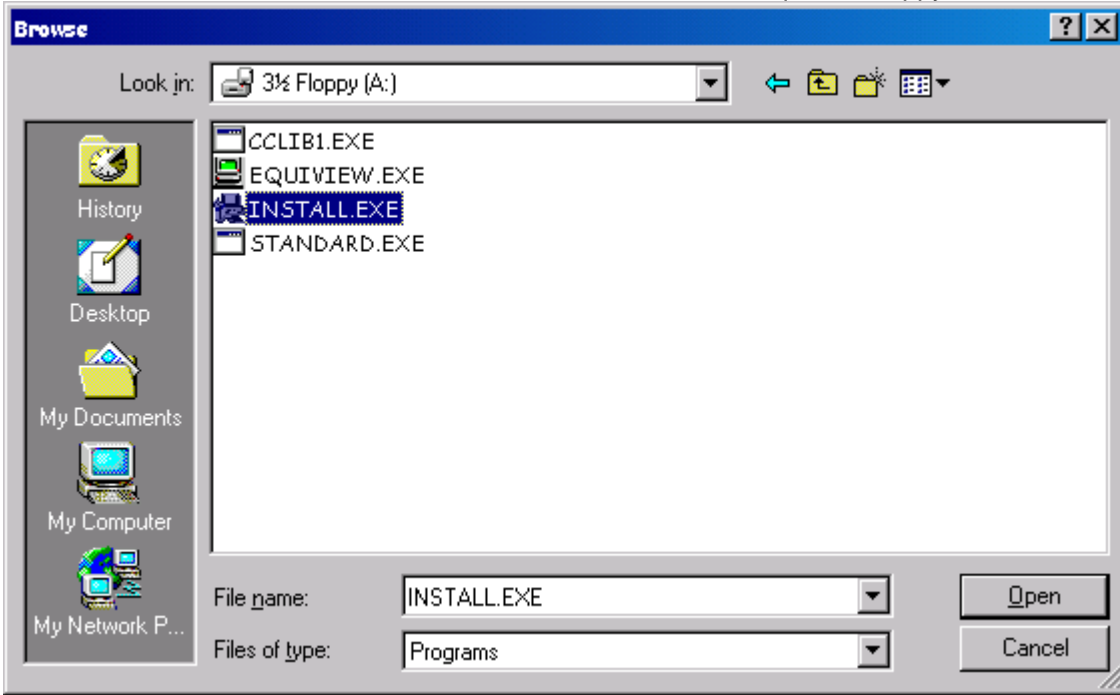


Figure 3.2.9.8 Browse

Press the "Open" button. See below for a view of the "Run" window with the "install.exe" selected.

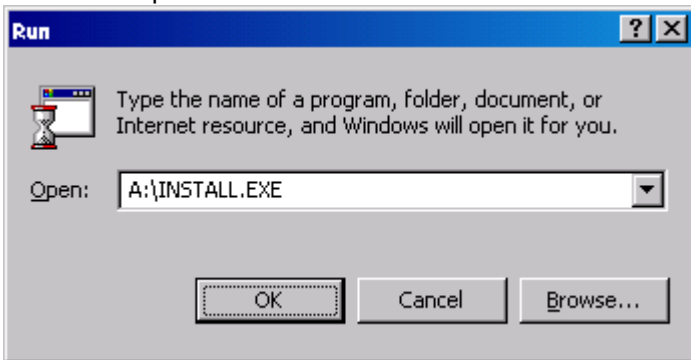


Figure 3.2.9.9 INSTALL.EXE

Press "Ok" and the following window will appear, "EquiView Installation".

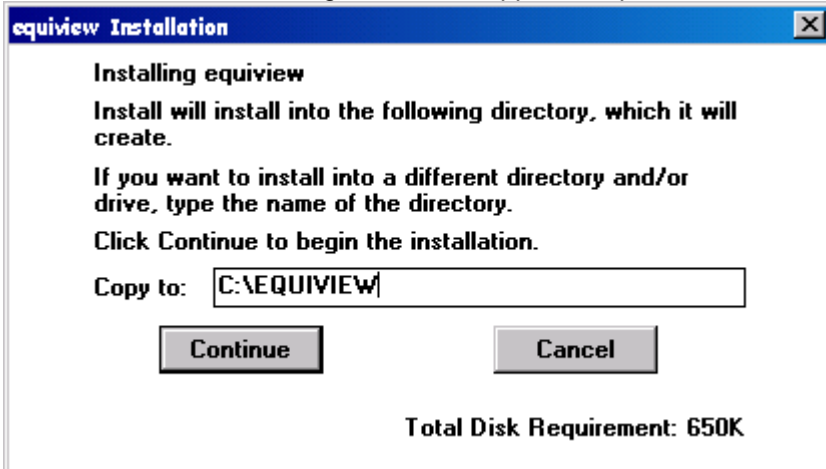


Figure 3.2.9.10 EquiView Installations

Press "Continue" to install the software in the default location or select a different location by typing the path into the "Copy to:" edit box. See below for a view of the "EquiView Installation" copying files to the system.

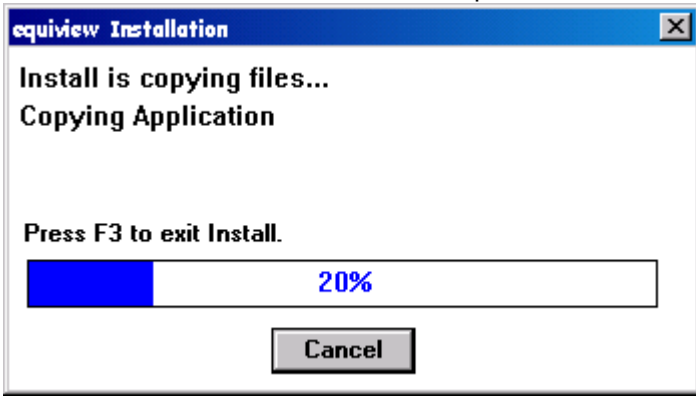


Figure 3.2.9.11 EquiView Installation Copy File

After the file copying is completed select "OK" to finish the installation. See below for a view of the "Install" window.

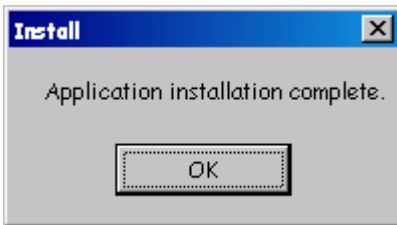


Figure 3.2.9.12 Install

This concludes the EquiView installation procedure.

3.2.12 Terminal Server Configuration

This section will describe the procedure for downloading a configuration file to the Terminal Server.

Run the EquiView software by selecting the "Start" menu and then select "Programs". Now select "EquiView" and then select "EquiView". See below for a view of the EquiView software.

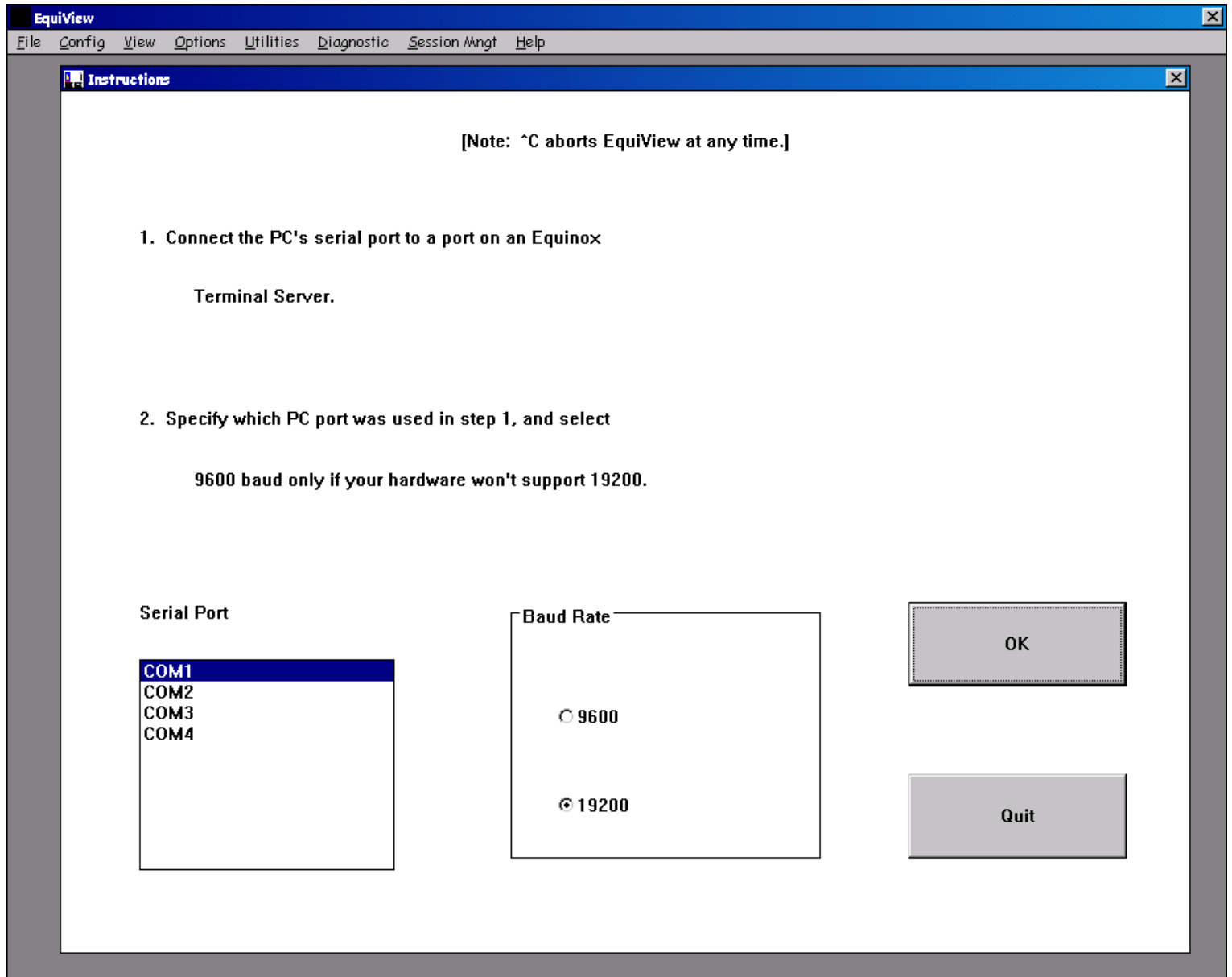


Figure 3.2.11.1 EquiView Instructions

Select the COM PORT that the Terminal Server is connected to on the Web Server PC and press “Ok”. See below for a view of the EquiView software. The “**LAT_00807D210F94**” number will change from Terminal Server to Terminal Server.

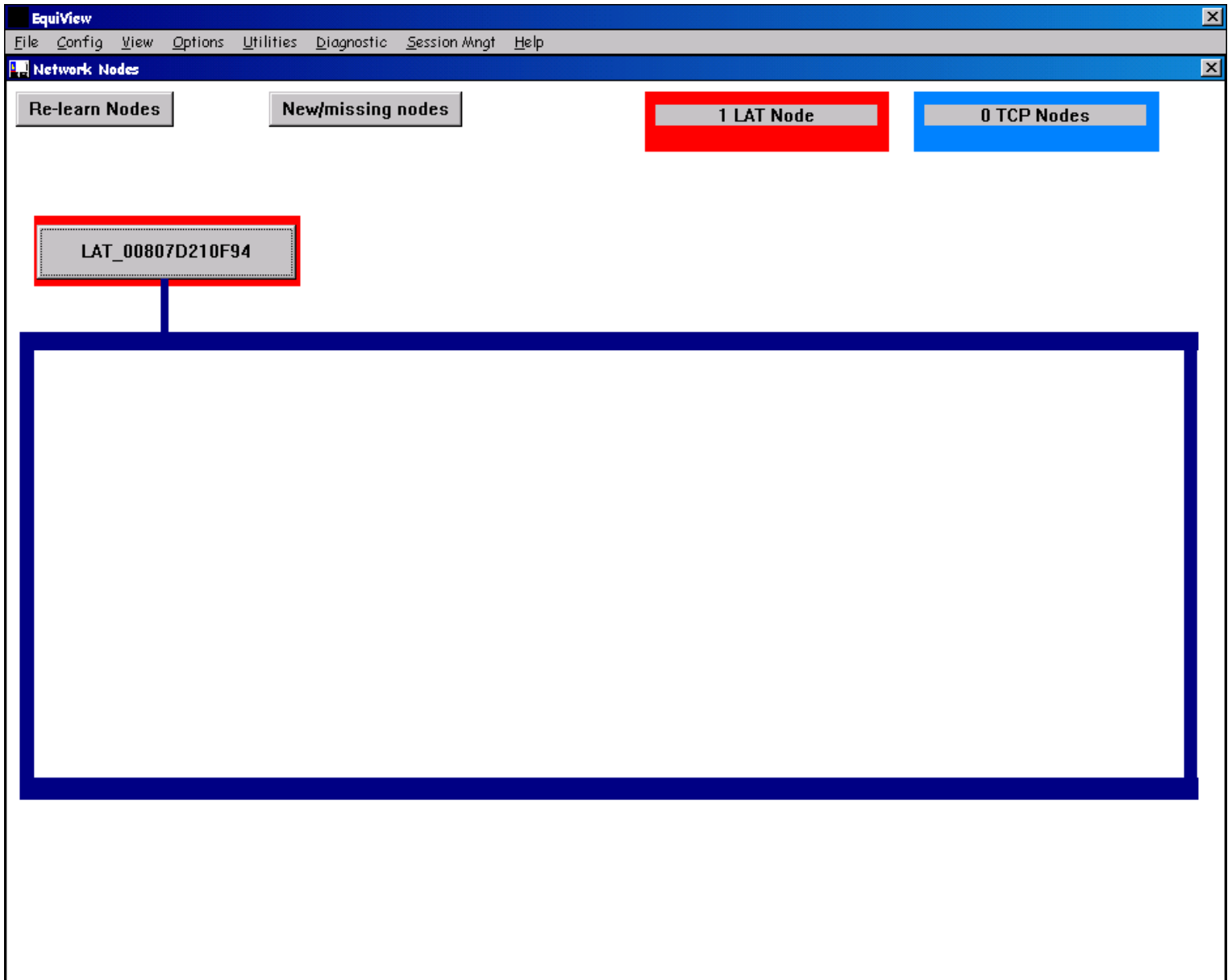


Figure 3.2.11.2 EquiView LAT

Press the “LAT_00807D210F94” button. See below for a view of the EquiView software.

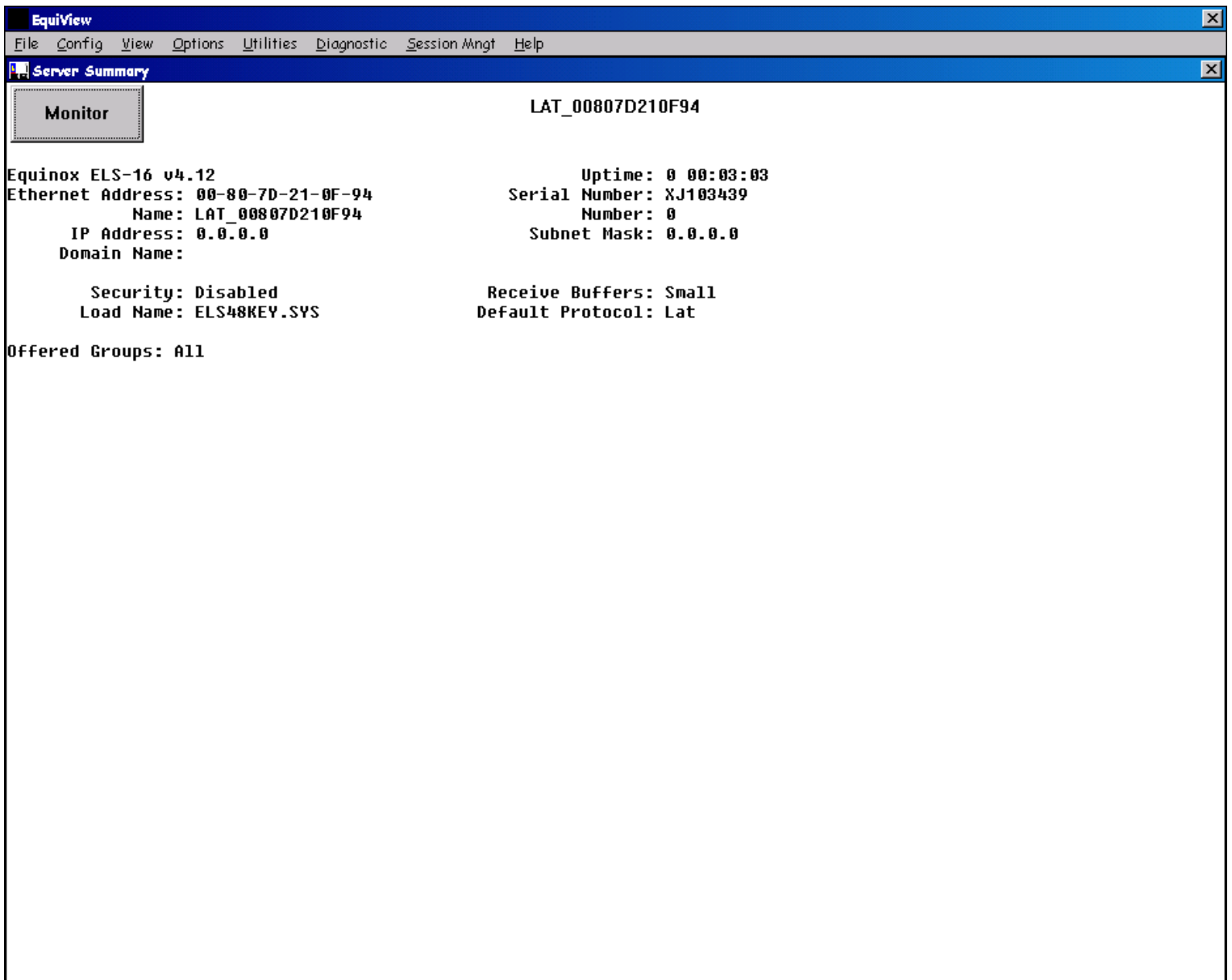


Figure 3.2.11.3 Server Summary

Select “Config” and then select “Download configuration to server”. See below for a view of the “Warning...” window.

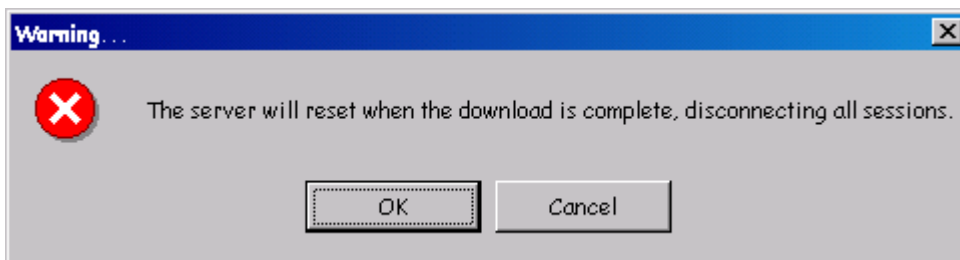


Figure 3.2.11.4 Warning

Select "Ok". See below for a view of the "Configuration File:" window.

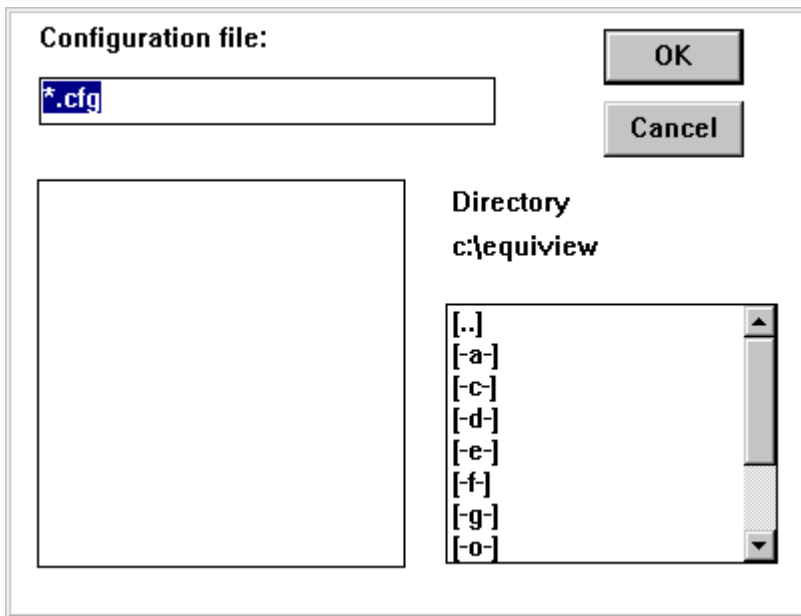


Figure 3.2.11.5 Configuration File

Browse to the location of the Terminal Server Configuration software installed in **step 3.2.2**. See below for a view of the "Configuration file:" window with the directory created in **step 3.2.2**.

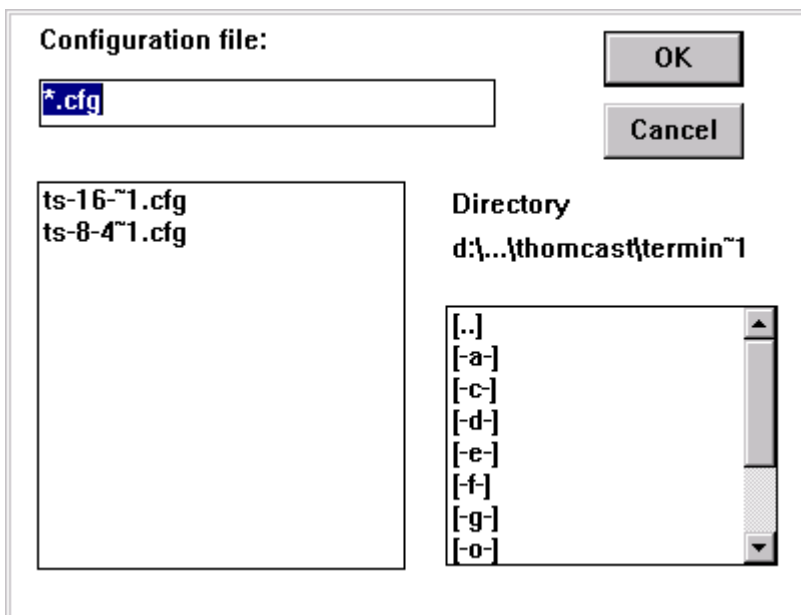


Figure 3.2.11.6 Configuration File Directory

Select the file, "ts-16--1.cfg" for a 607880-01 (16 port Terminal Server) and press "OK". See below for a view of the EquiView software downloading the file to the Terminal Server.

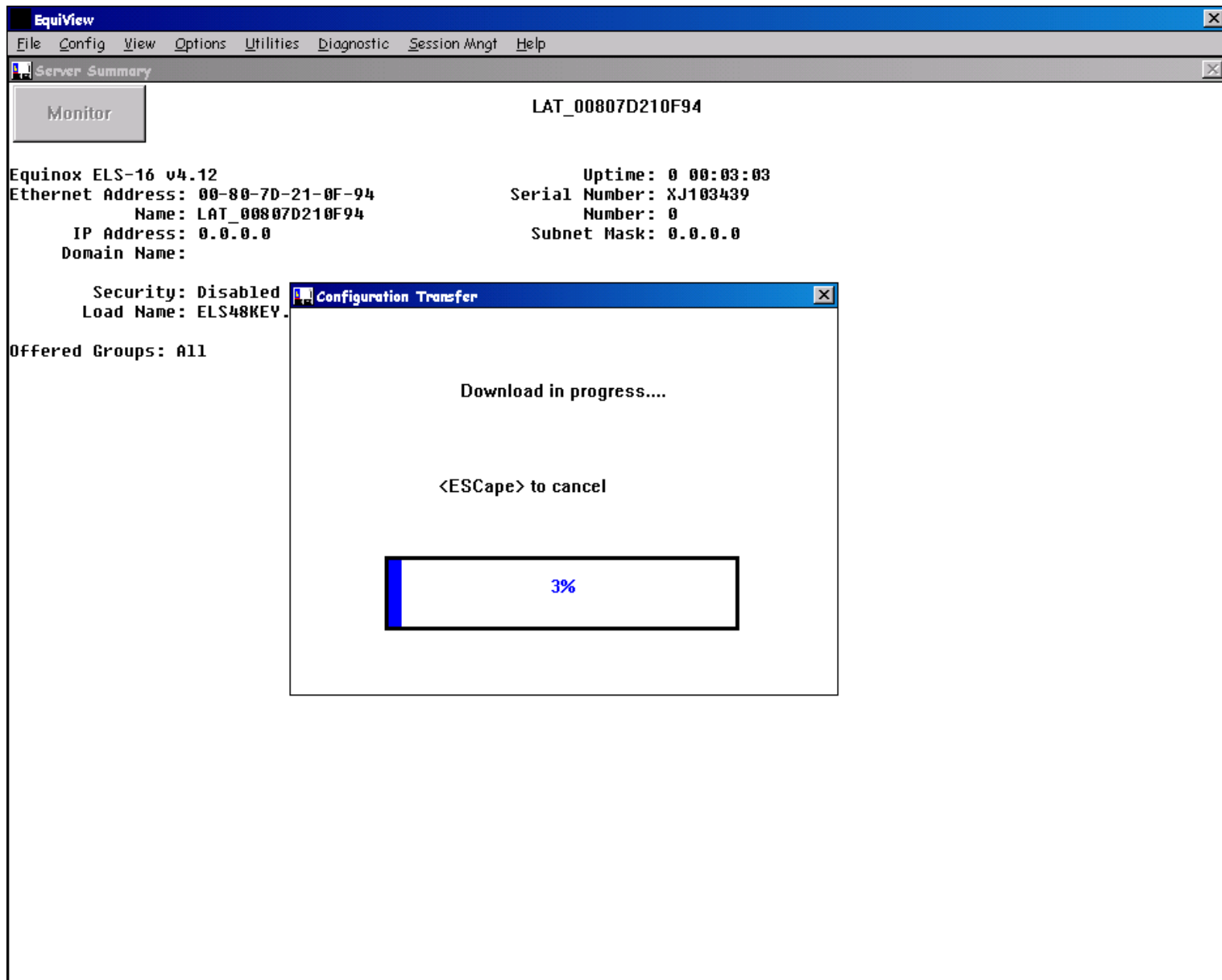


Figure 3.2.11.7 File download

When the download is complete the following window will appear.

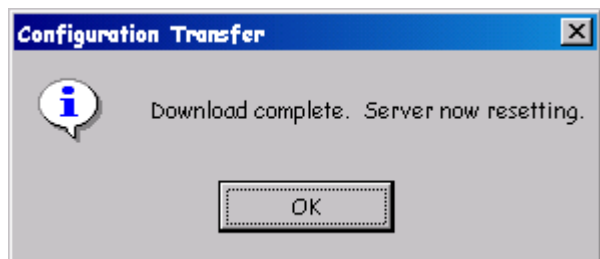


Figure 3.2.11.8 Download Complete

Press "Ok", the following window will appear.



Figure 3.2.11.9 Server reset

Press "Ok" and the EquiView software will close.

Restart the EquiView software and verify the following window. The name of the Terminal Server is "TS-16" for a 607880-01.

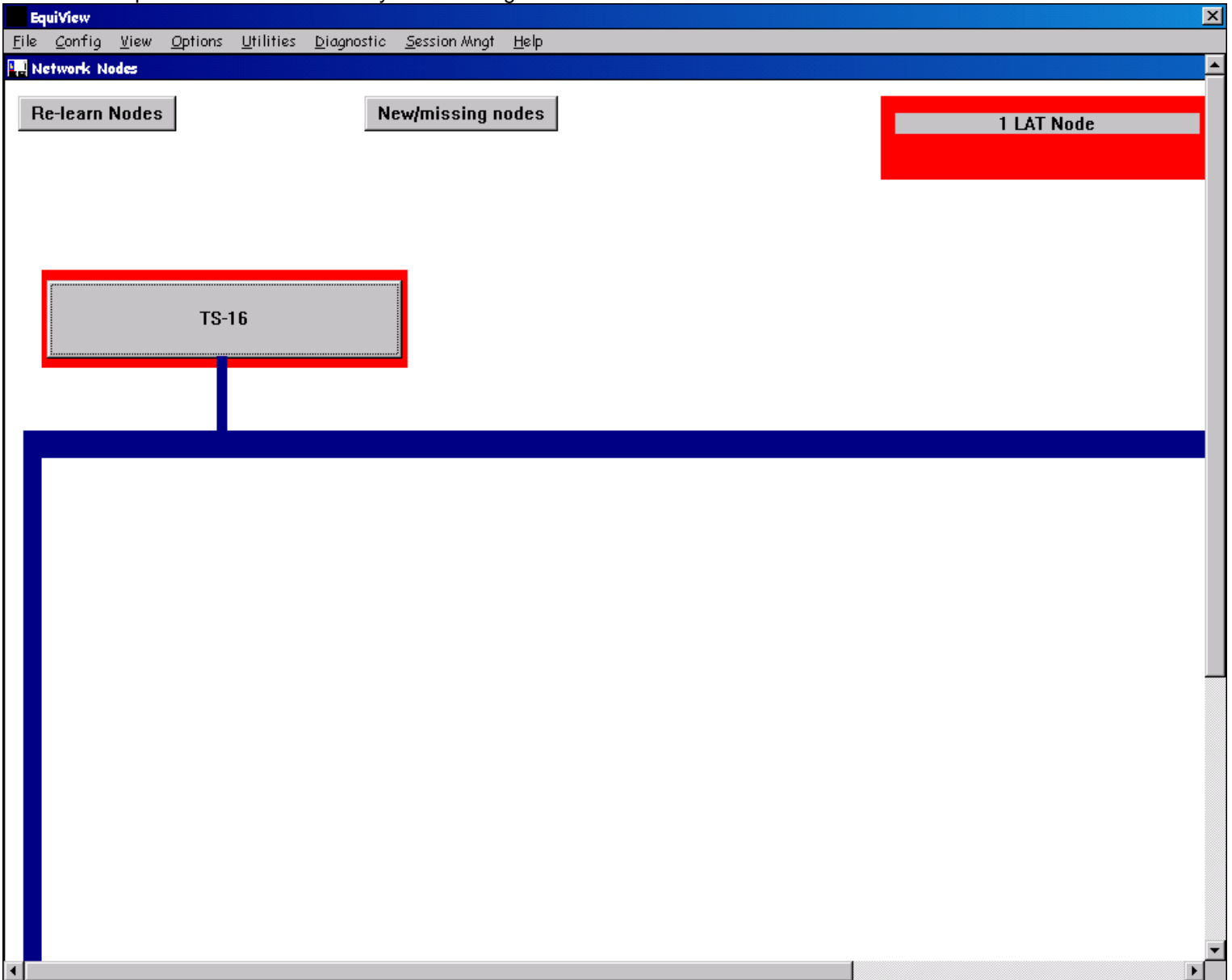


Figure 3.2.11.10 TS-16

Close the EquiView` software.

This completes the Terminal Server Configuration procedure.

3.2.13 Internet Explorer Configuration

The first time Internet Explorer is run the following screen will appear. Check “**I want to set up my Internet connection manually, or I want to connect through a local area network (LAN)**” and click the “Next>” button.

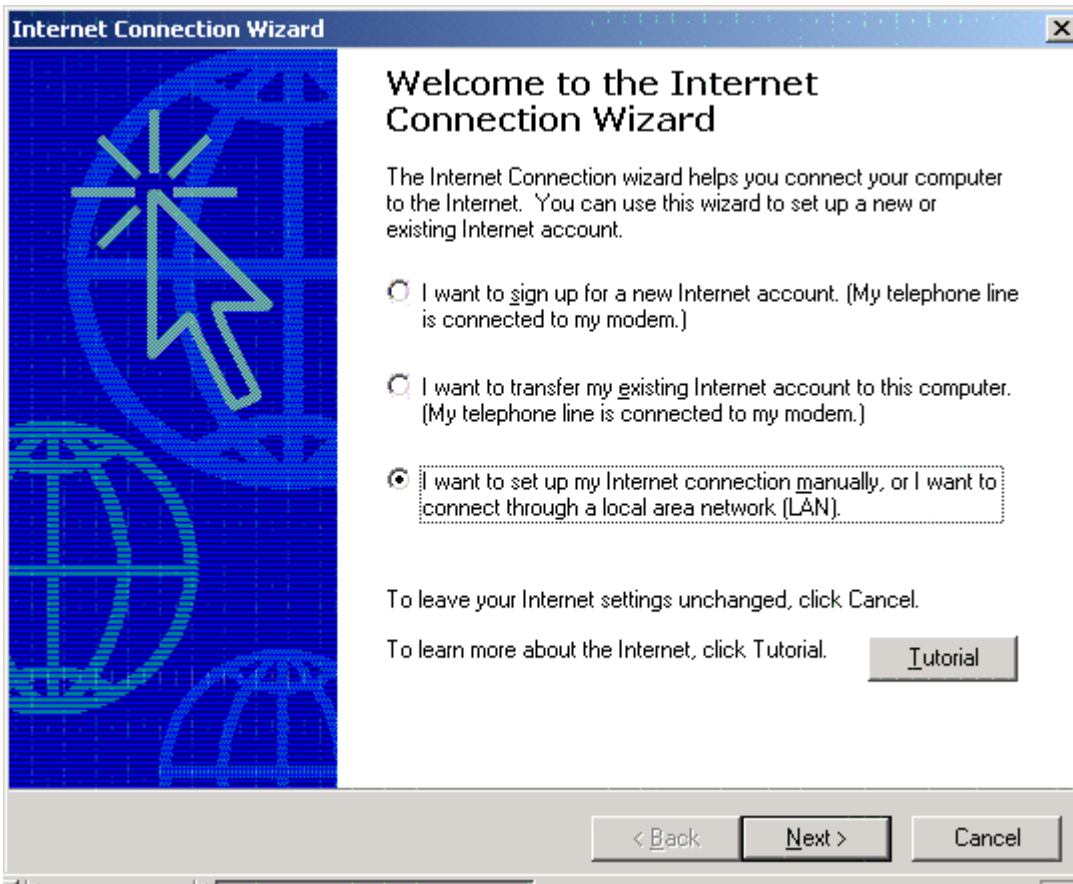


Figure 3.2.12.1 Internet Connection Wizard

The following screen will be displayed. Check **"I connect through a local area network (LAN)"** and click the "Next>" button.

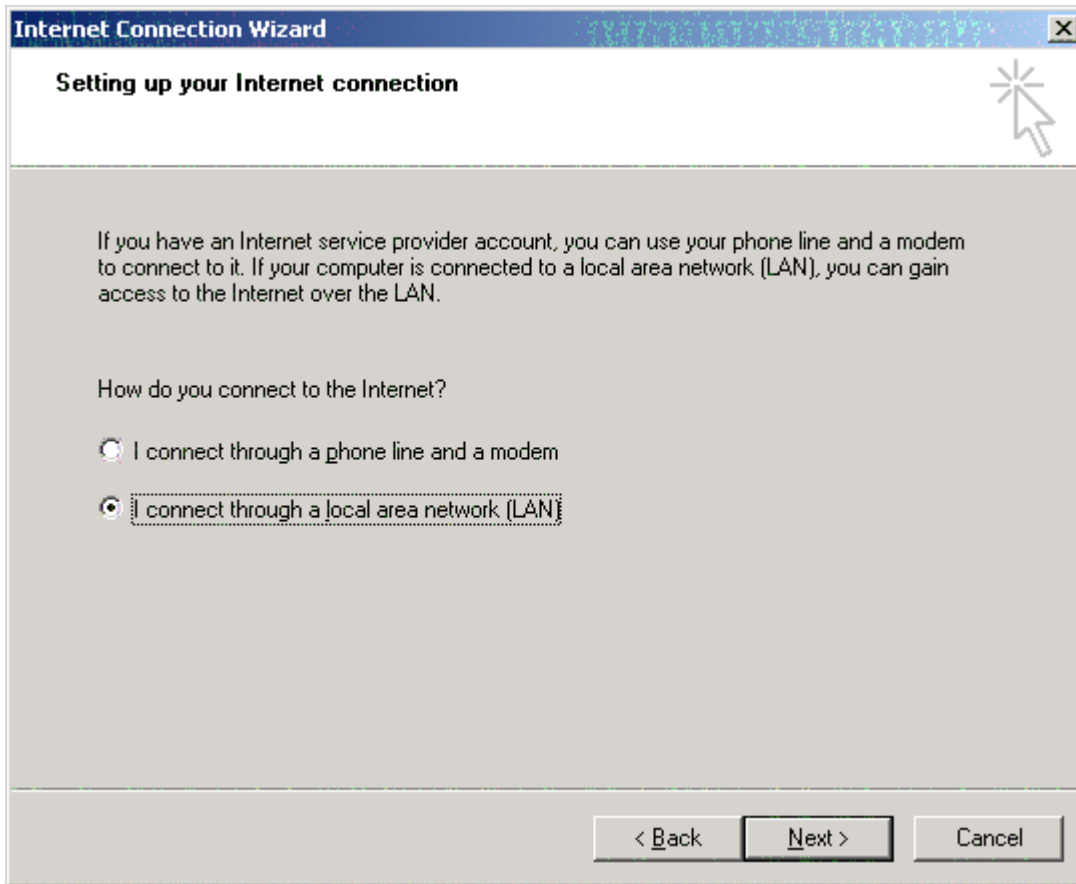


Figure 3.2.12.2 Setting up your Internet connection

The following screen will appear. Check “**Automatic discovery of proxy server (recommended)**” and click “Next>”.

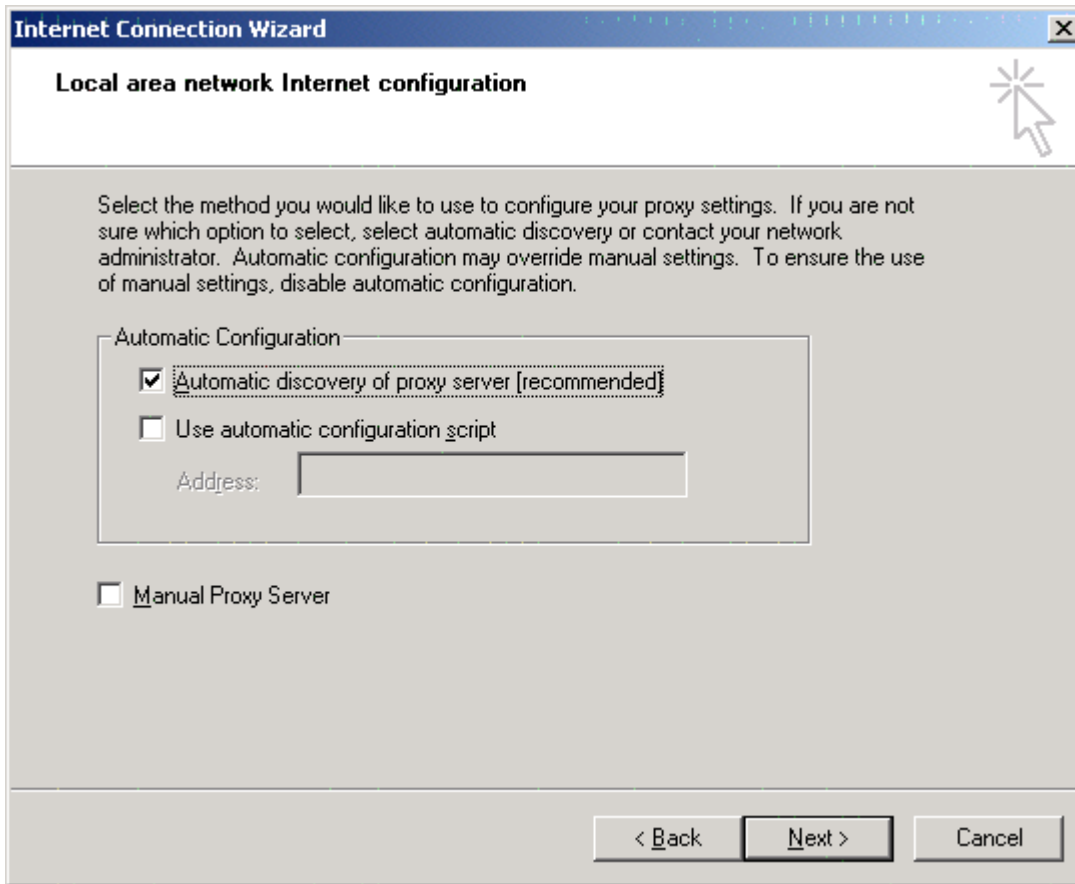


Figure 3.2.12.3 Local area network Internet configuration

The following screen will appear. Check **No** to **“Do you want to set up an Internet mail account now?”** Click the **“Next>”** button.



Figure 3.2.12.4 Setup Your Internet Mail Account

The following screen will appear. Click "Finish" to complete the procedure.

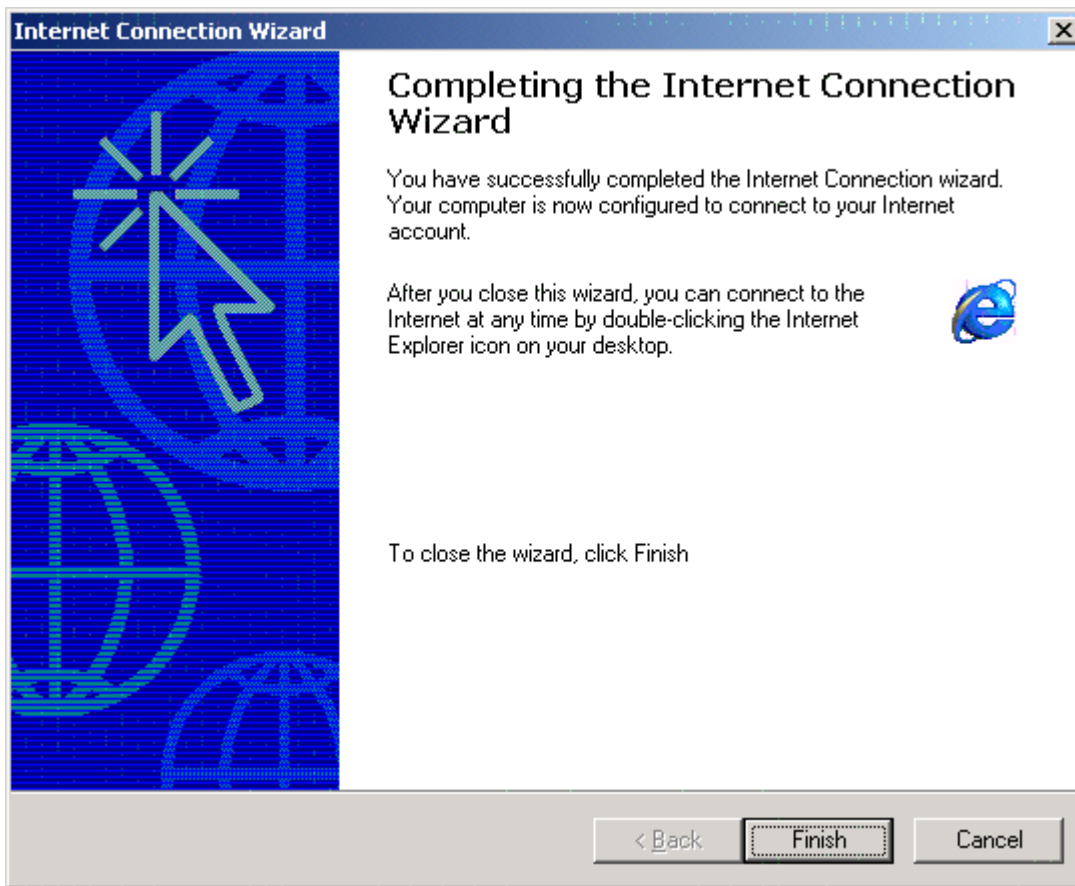


Figure 3.2.12.5 Close Internet Connections

3.3 Using the Web Based Control System

The Web Based Control System allows only one user at a time access to any given web page. Any other user who tries to access the same page that is currently active will receive a Network Communication error. A **Red Network LED** indicates this error.

3.3.1 Using the Web Based Control System on a Web Server Computer

Open Internet Explorer and enter the computer name or "192.168.1.1" into the address bar of the web browser. See below for a view of the home page of the Web Based Control System.

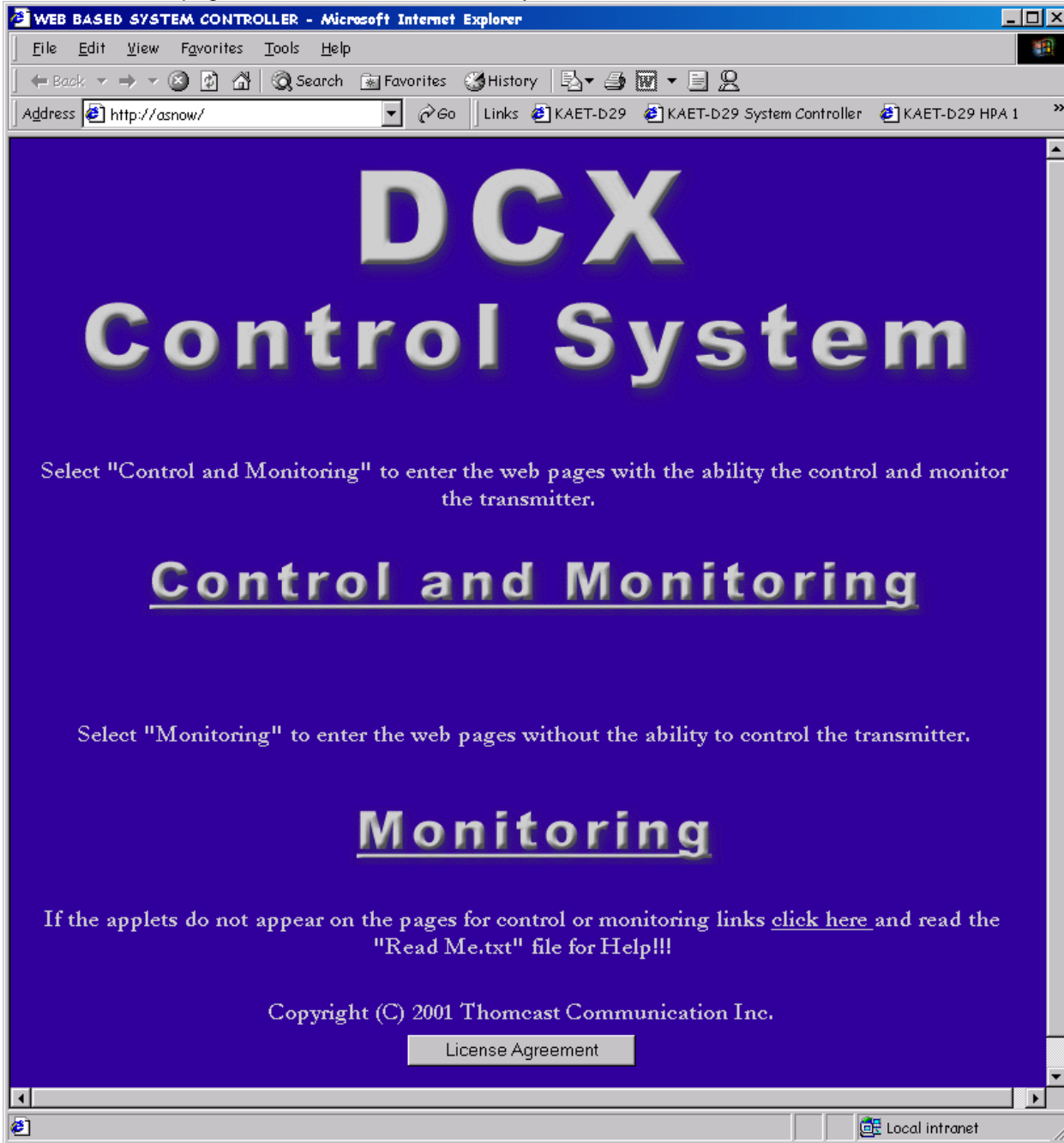


Figure 3.3.1.1 Web Server Computer.

Select the "**Control and Monitoring**" or "**Monitoring**" link to enter the Web Based Control System. This will allow access to the transmitter control and monitoring features.

If this page is not displayed, use this document to troubleshoot the problem.

This concludes the "Using the Web Based Control System" on a Web Server Computer procedure.

3.3.2 Using the Web Based Control System from a Client using Dial-up-Networking

Connect to the Web server computer using Dial-up-Networking. See "Help" within the operating system regarding the use of "Dial-up-Networking".

Open Internet Explorer on the client computer and enter the Web Server computer name or "192.168.1.1" into the address bar of the web browser. See below for a view of the home page of the Web Based Control System.

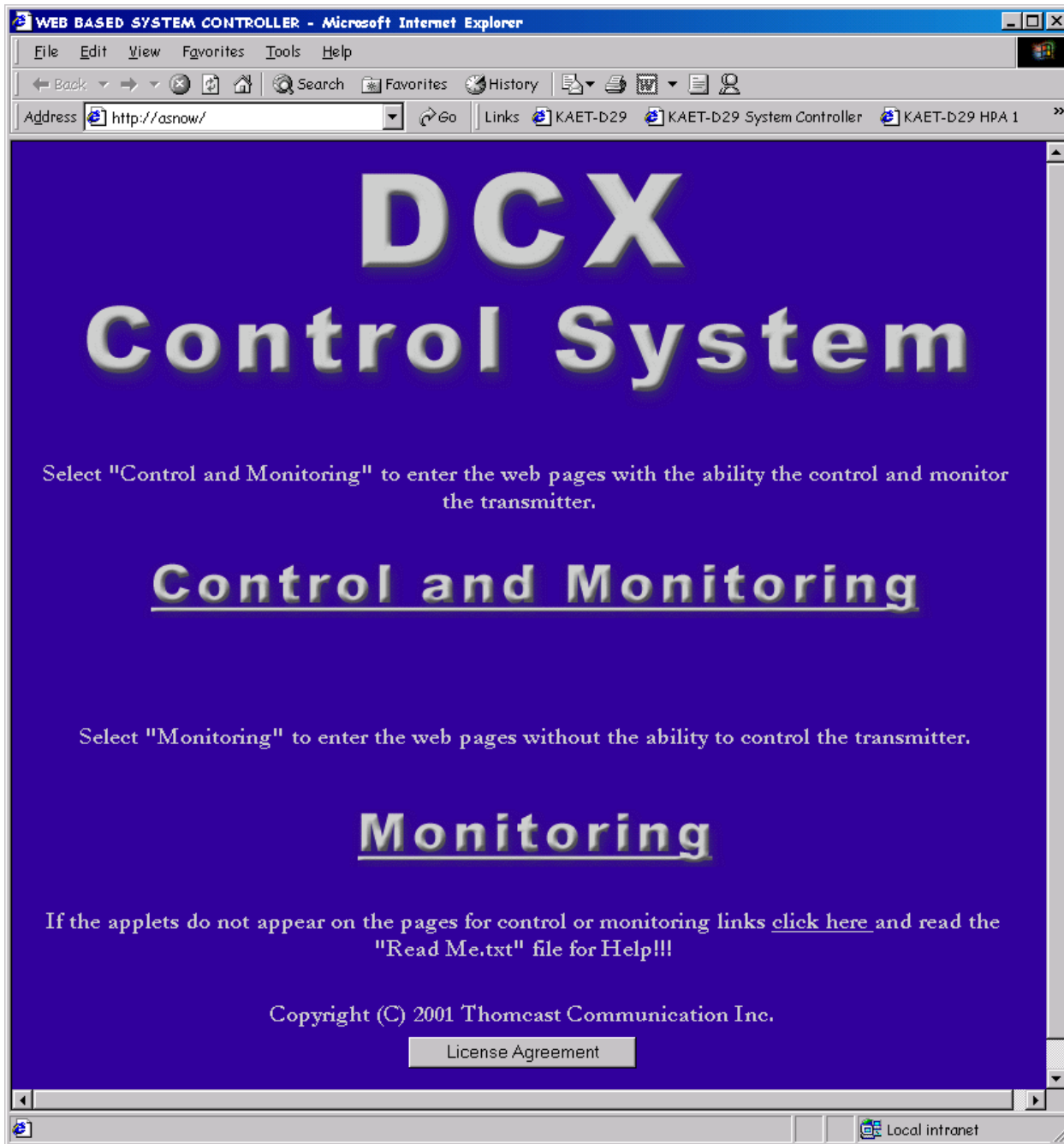


Figure 3.3.2.1 Dial-up Networking

Select the "**Control and Monitoring**" or "**Monitoring**" link to enter the Web Based Control System. This will allow access to the transmitter control and monitoring features

If this page is not displayed, use this document to troubleshoot the problem.

This concludes the Using the Web Based Control System from a Client using Dial-up Networking procedure.

3.3.3 Using the Web based Control System from a Client using a Company LAN

Open Internet Explorer on the client computer and enter the Web Server computer name or the IP address, assigned by the MIS Network administrator, into the address bar of the web browser. See below for a view of the home page of the Web Based Control System.

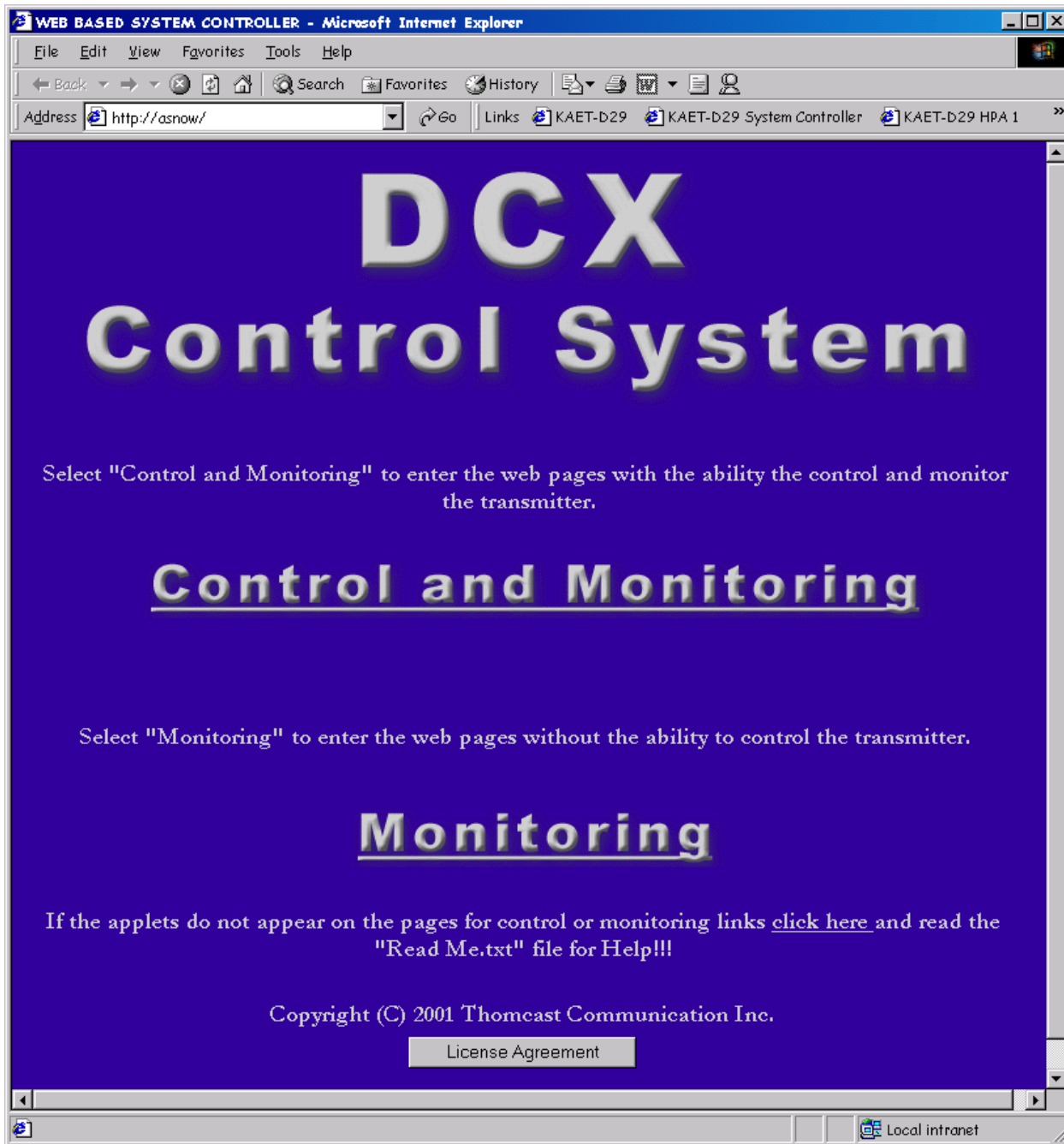


Figure 3.3.3.1 Client using a Company LAN

Select the “**Control and Monitoring**” or “**Monitoring**” link to enter the Web Based Control System. This will allow access to the transmitter control and monitoring features

If this page is not displayed, use this document to troubleshoot the problem.

This concludes the Using the Web Based Control System using a Company LAN procedure.

Windows, Windows Component Wizard and Internet Explorer are registered trademarks of Microsoft Corporation. All rights reserved.
Equinox and EquiView are trademarks of Equinox Systems, Inc. All rights reserved