

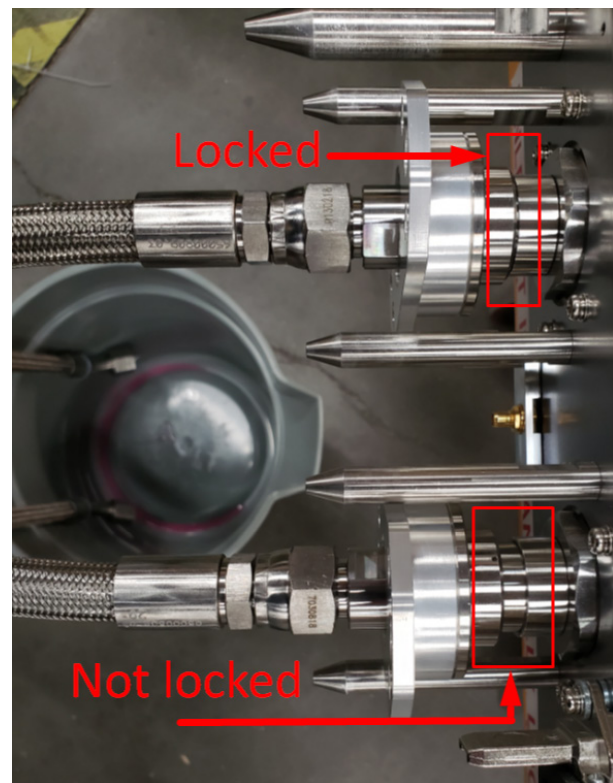
Draining Coolant from PARALLAX Power Amplifier (PA) Modules

When PA modules are removed from the transmitter, the quick release couplings seal the coolant inside the module. At this point, expansion of the coolant could result in damage to internal components.

For this reason, Comark requires the draining of the coolant from any PA module prior to transport, shipping, and/or storage. If necessary, Comark has loaner draining fixtures available.

If a module is to be drained immediately after being removed from operation, allow time for it to cool down before proceeding.

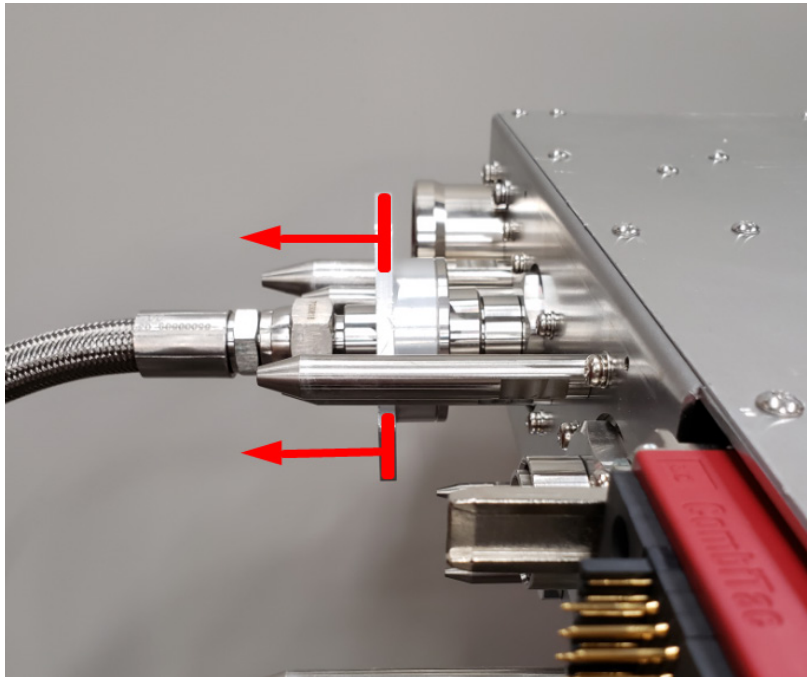
With the PA module on a flat stable surface, position a small bucket (1 gallon is suitable) to catch the coolant and attach the drain fixtures to the quick release couplings by pushing the tabs towards the PA until they lock in place.



As soon as the fixtures lock the coolant flows out. When the initial drainage has completed, lift the handles on the front plate of the PA so that further coolant collects at the back of the module and drains.

Expect ¼ to ½ cup of coolant to drain out by the completion of this procedure.

Remove fixtures by pulling the tabs on the collars away from the PA until they unlock.



Note: Return draining fixtures to the address below.

Hitachi Kokusai Electric Comark LLC
104 Feeding Hills Road
Southwick, MA 01077 U.S.A.
(800) 345-9295
support@comarktv.com
www.comarktv.com